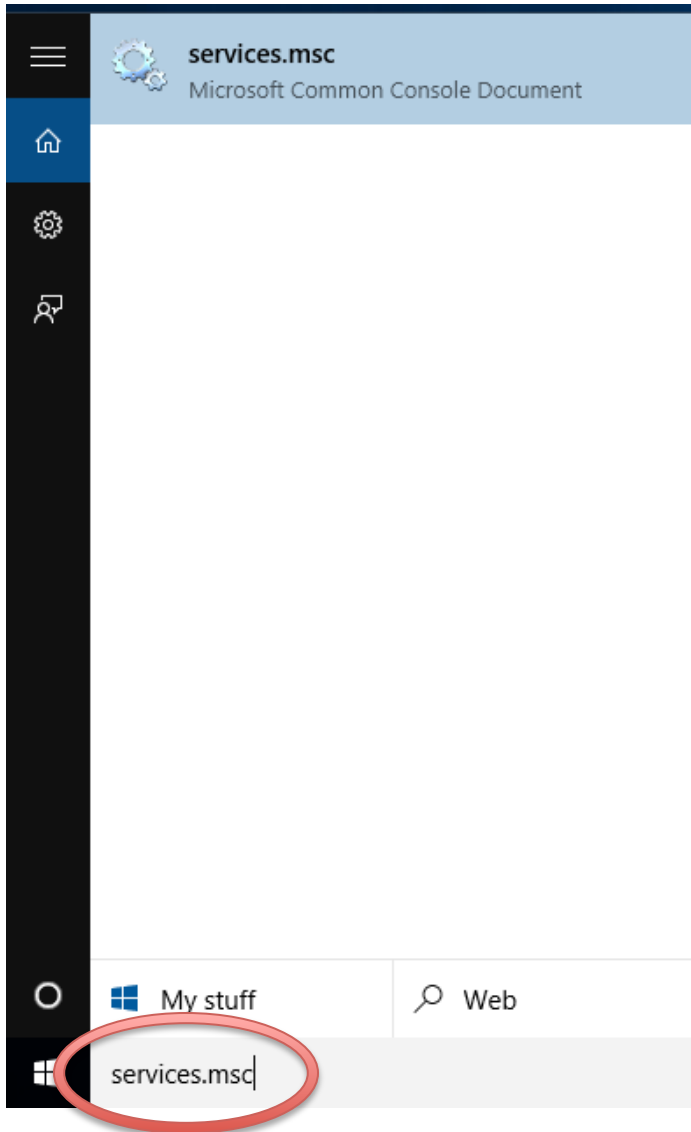


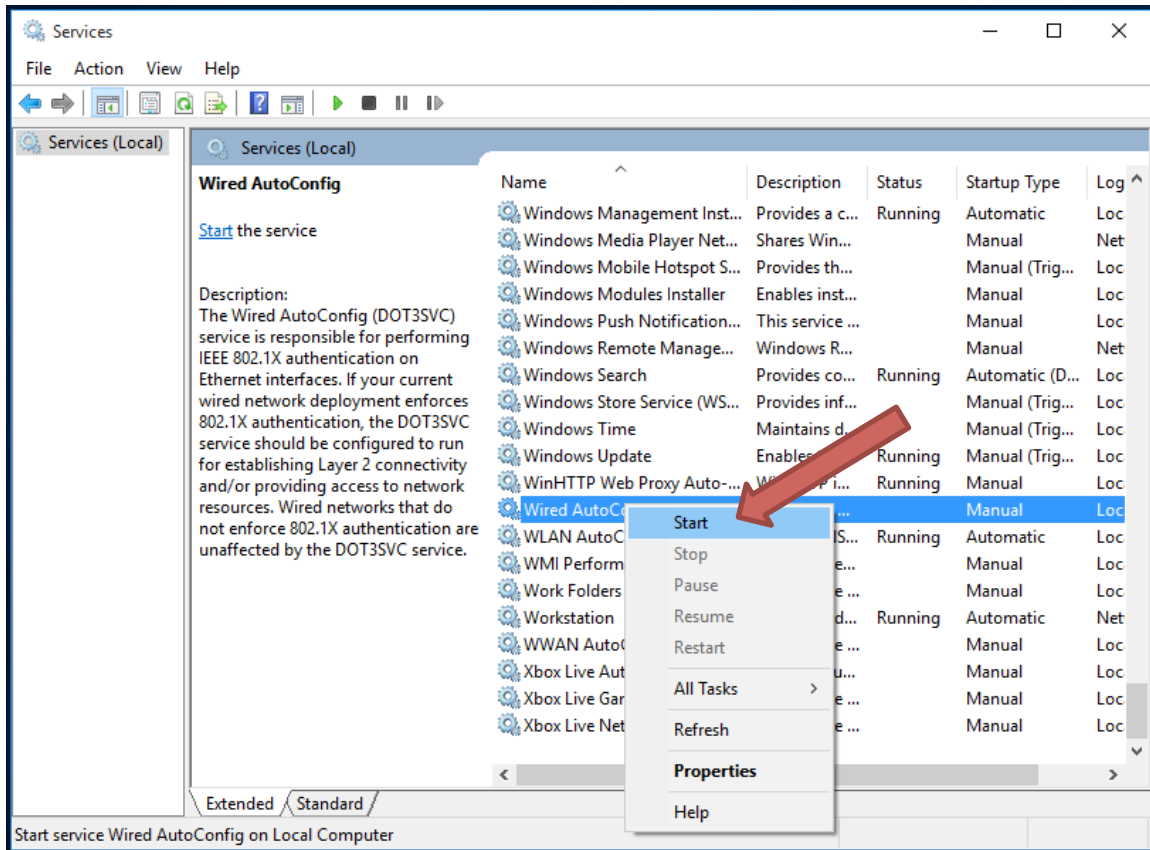
Catawba College Wired Network Configuration for Window 10

Catawba IT strongly recommends that you configure your computer to connect to the wired network. While students often exclusively use the wireless connection, it is a good idea to have your wired connection configured in case of an outage of wireless service. All dorm rooms come equipped with wired ports.

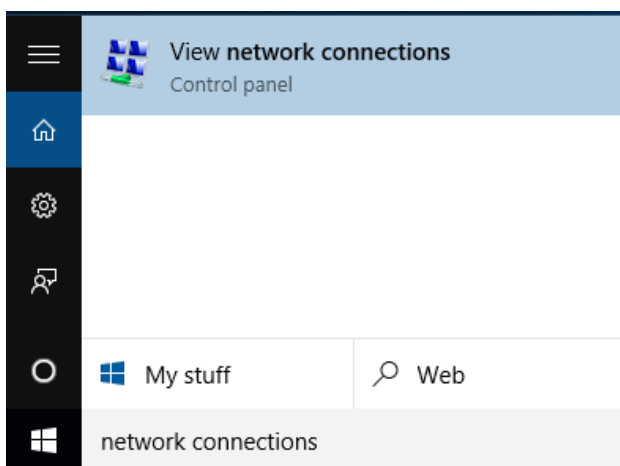
Begin by typing **services.msc** in the search bar on the bottom left of your task bar, then click on **services.msc** in the result list.



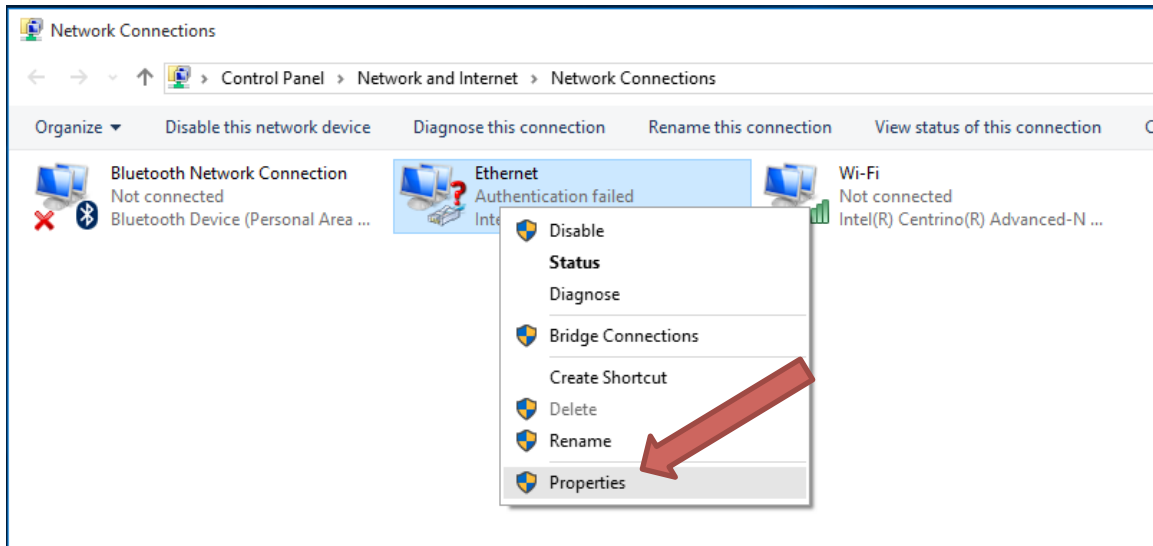
In the Services dialog box, right-click on **Wired AutoConfig** (you will have to scroll down to the bottom of the list to find it), and select **Start** from the pop-up menu.



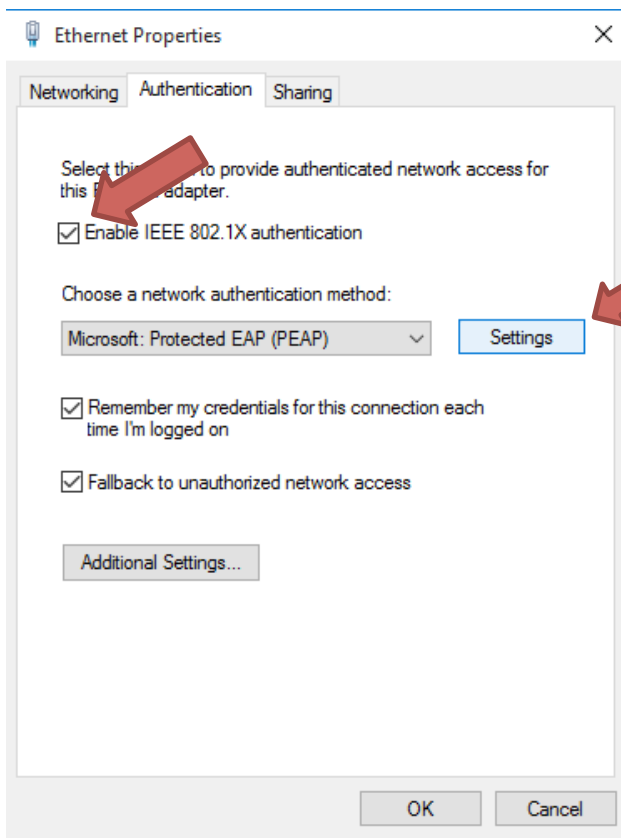
Close out of the previous dialog box, and type **network connections** in the search box at the bottom left of the desktop. Click on **View network connections** when it appears in the results.



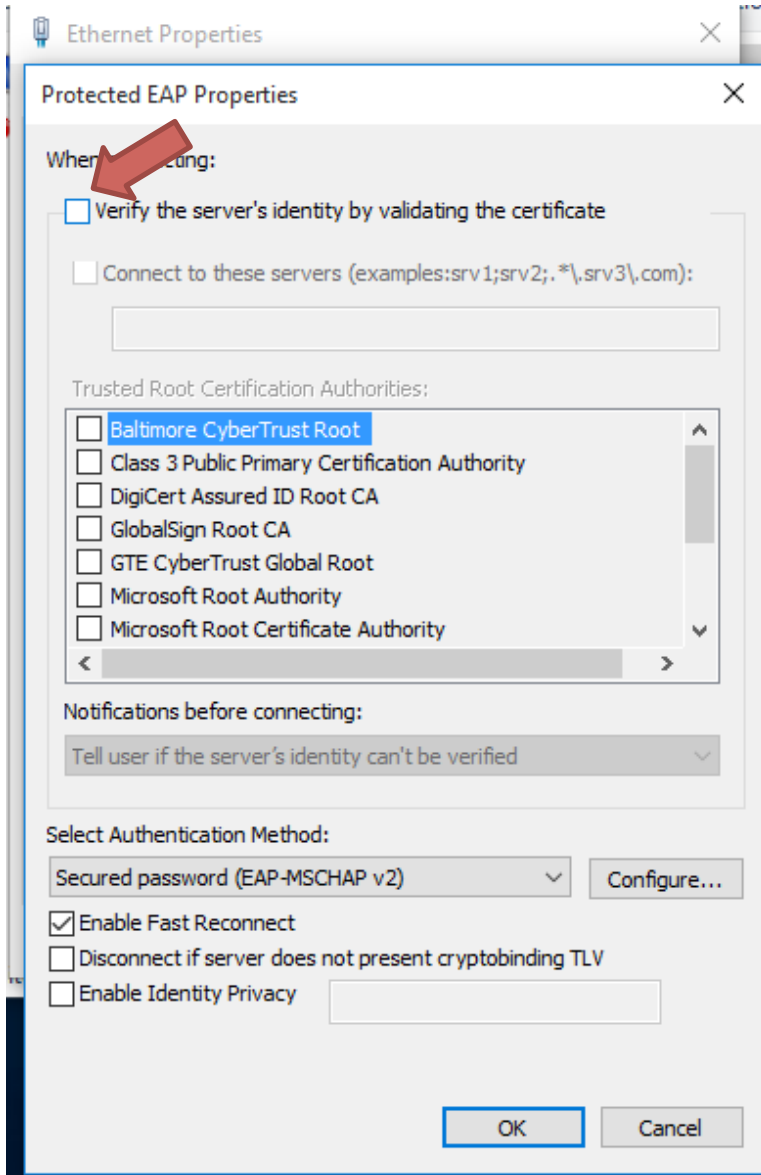
In the Network Connections dialog box, right-click the wired connection (it will usually be called **Ethernet**). Select **Properties**.



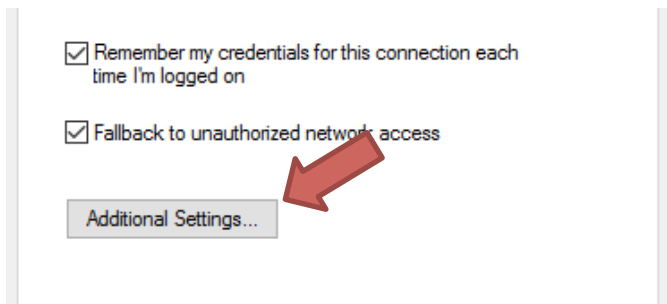
The Ethernet Properties dialog box will appear. Click the **Authentication** tab. Make sure **Enable IEEE 802.1X authentication** is checked. Click the **Settings** button beside Microsoft: Protected EAP (PEAP).



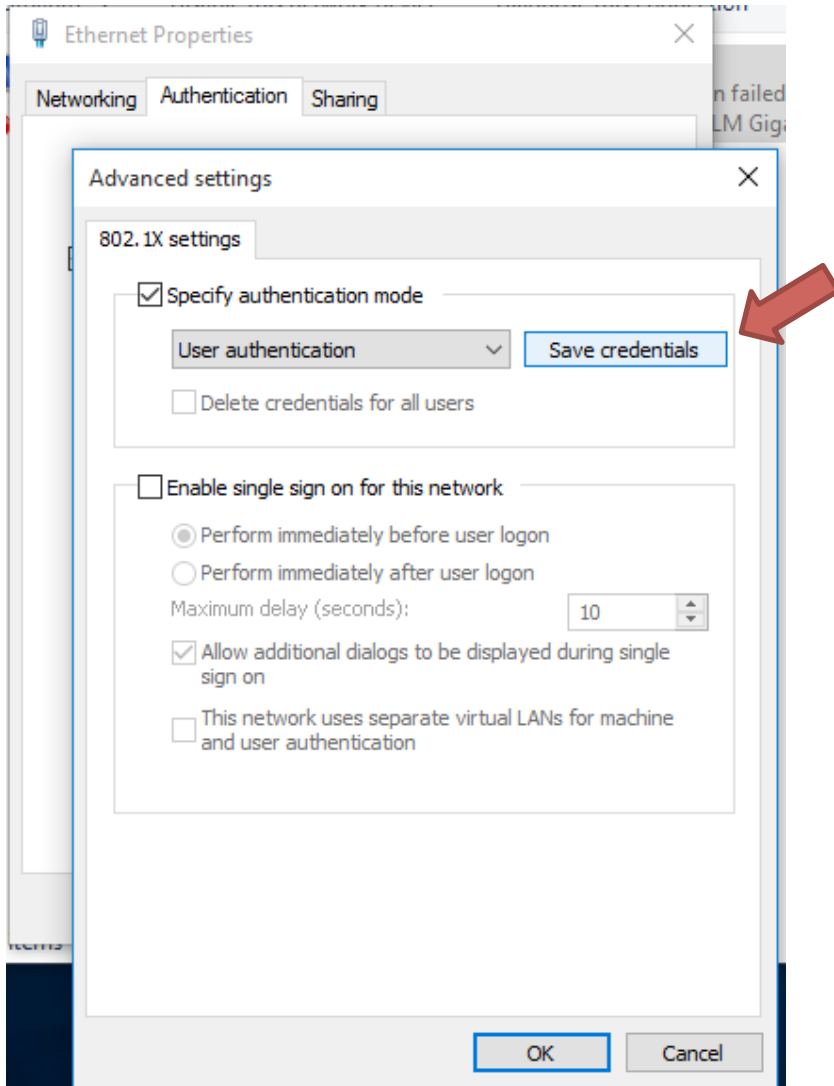
In the Protected EAP Properties box, uncheck **Verify the server's identity by validating the certificate**. Click the **OK** button.



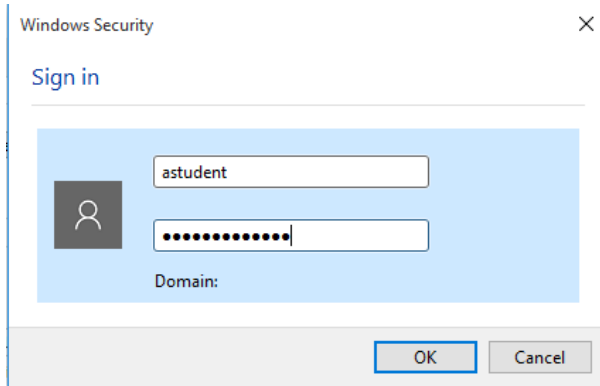
Back at the Ethernet Properties box, Click the Additional Settings button.



In the **Advanced Settings** box, check **Specify authentication mode**, then select **User authentication** from the drop down list. Click the **Save credentials** button.



Enter your Catawba user name and password in the Windows Security dialog box, then click OK.



The Ethernet network connection will authenticate to the network. Once this has occurred, catuskynet2 will be displayed as the network status. This means you have properly connected to the wired network.

