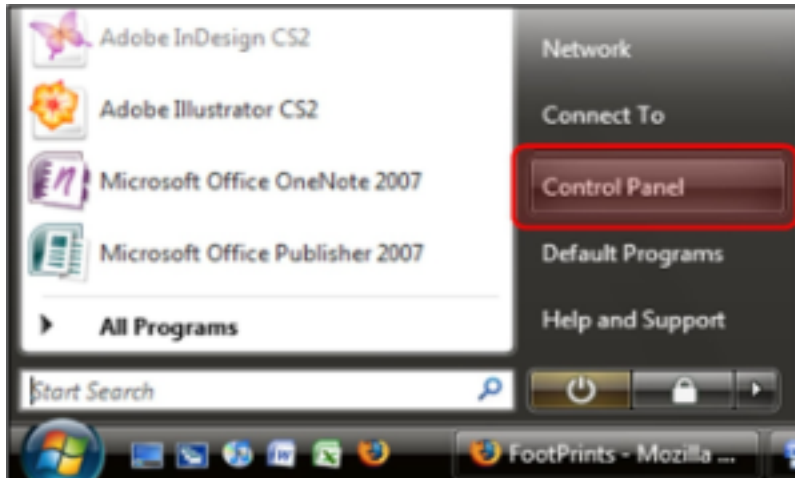
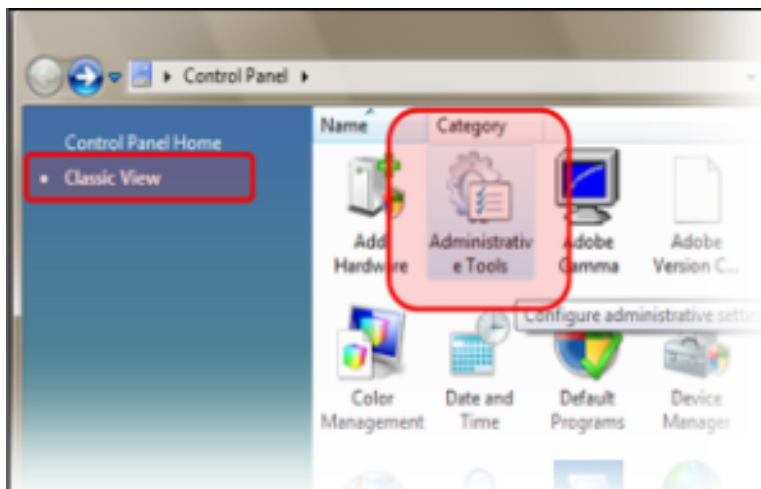


Catawba College Wired Network Configuration for Window Vista

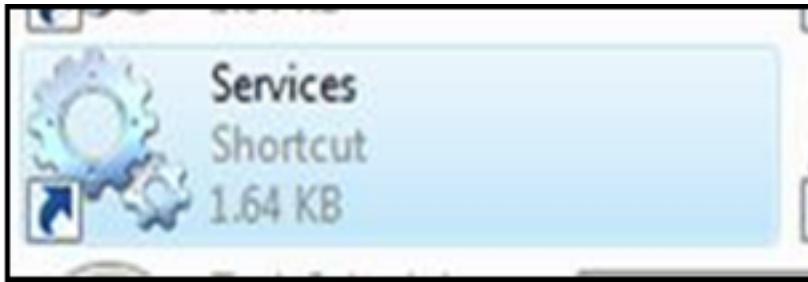
1. Click **Start** and select **Control Panel**.



2. On the left-hand side you should see Classic View and Control Panel Home. Select and click on **Classic View**.
3. Double-click on **Administrative Tools**.

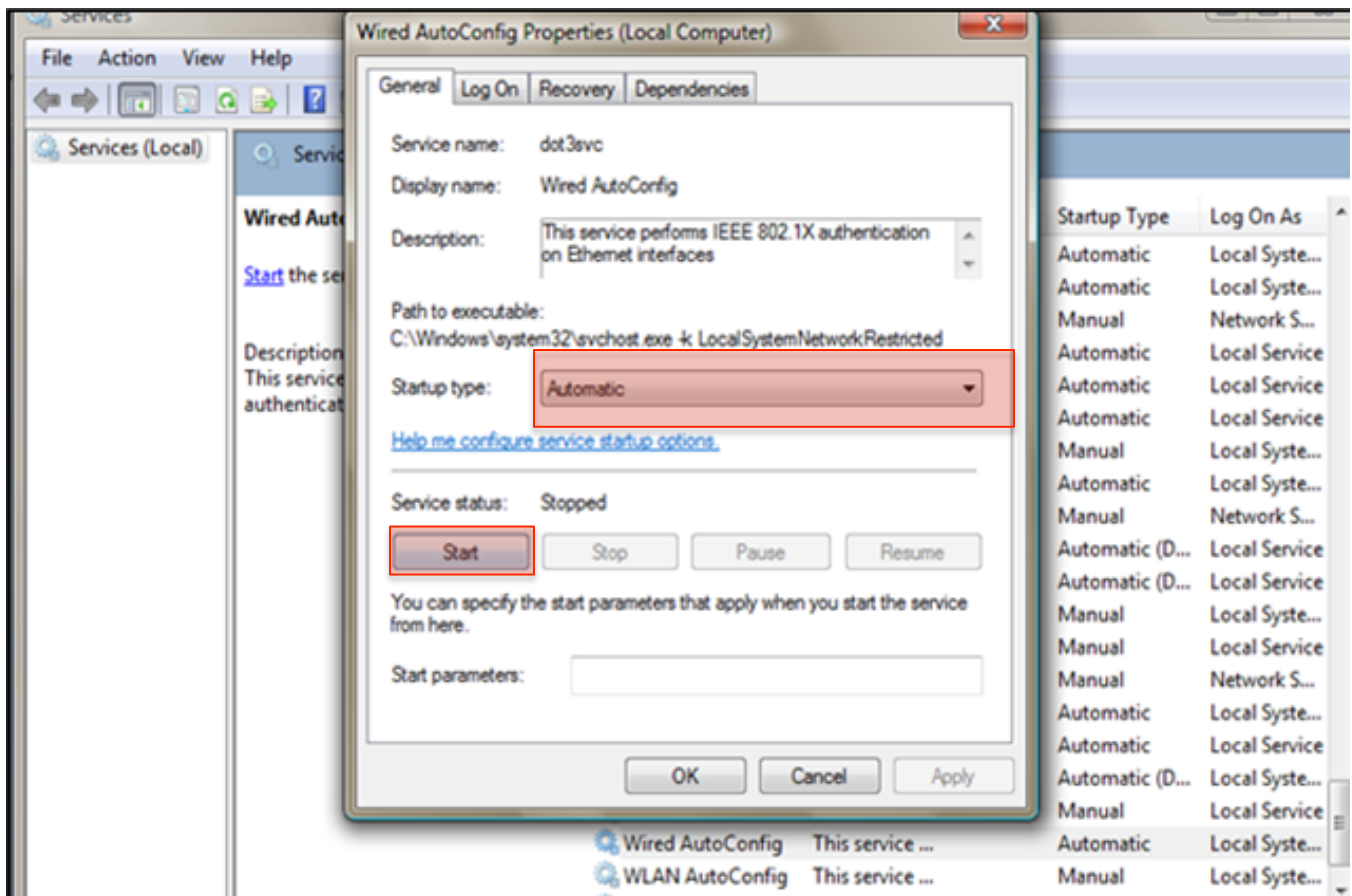


4. In the window that appears, double-click on **Services**.



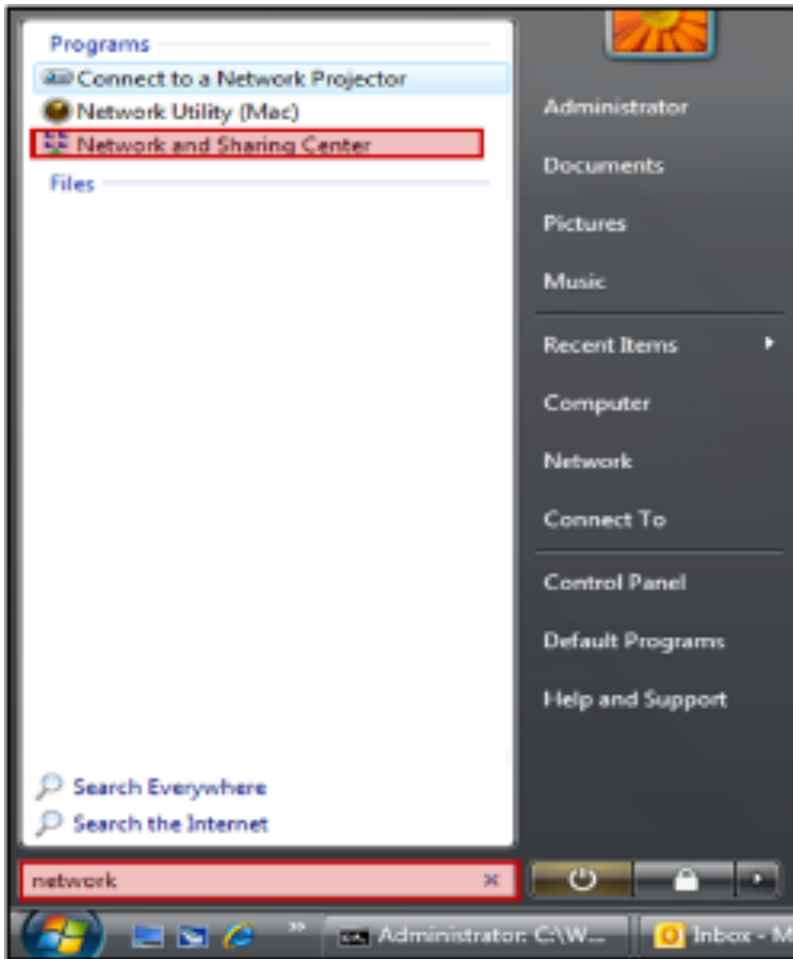
5. Scroll down to **Wired AutoConfig** and double-click on it.
6. In the **Wired AutoConfig Properties** window make sure that **Startup Type** is set to **Automatic**. Under Service Status click the **Start** button.

Note: If you are able to click on the Stop or Restart buttons, then the service is already started.

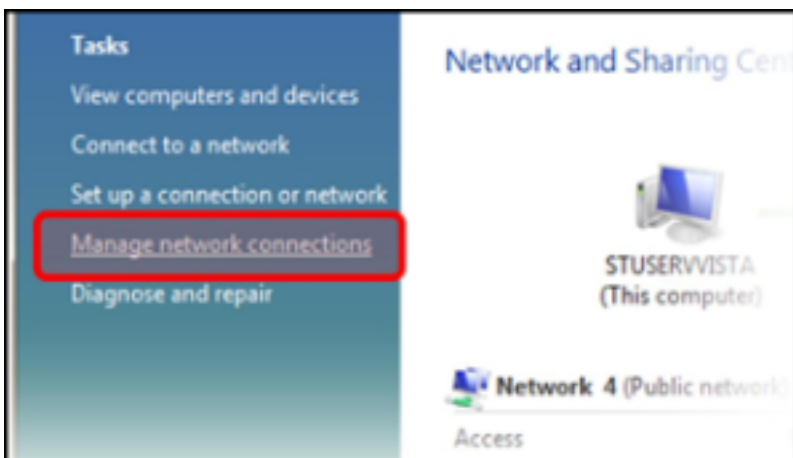


7. Click **OK** and close out of all open windows.

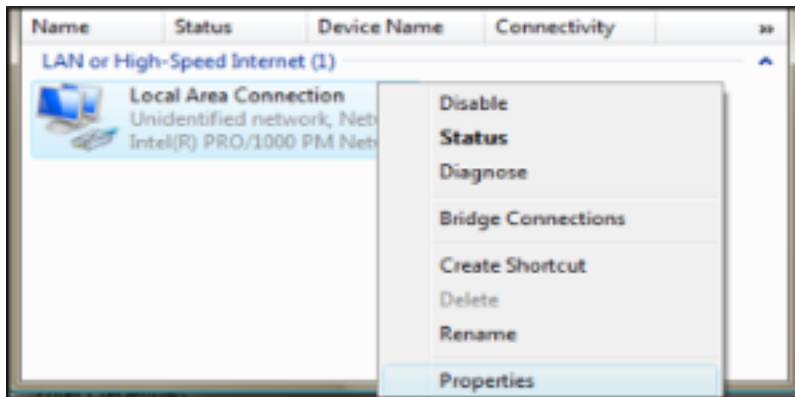
8. Select **Start**, type **Network** into the search bar, and select **Network and Sharing Center** from the options that appear.



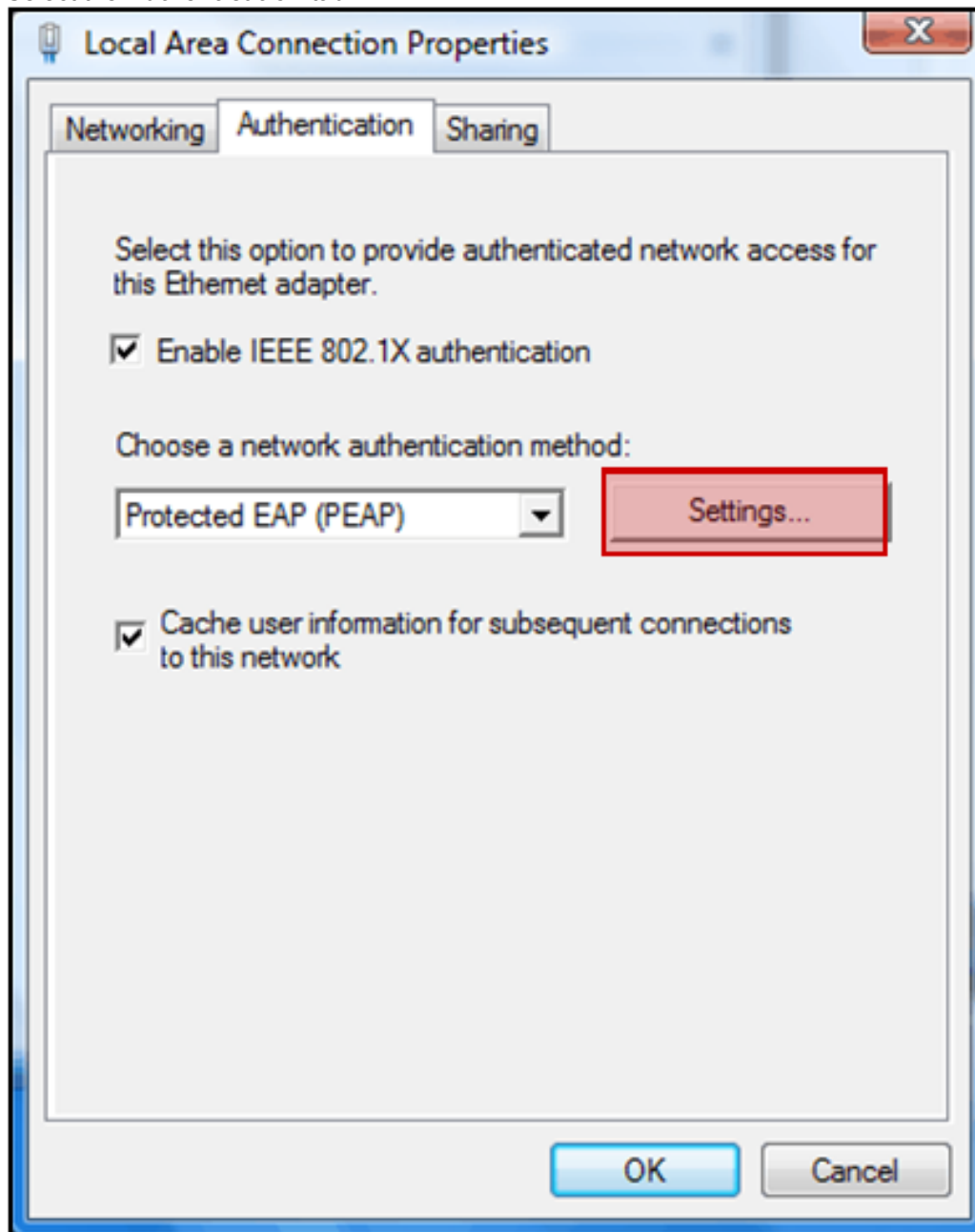
9. On the left-hand side of the window, select **Manage network connections**.



10. Right-click **Local Area Connection** and select **Properties**.

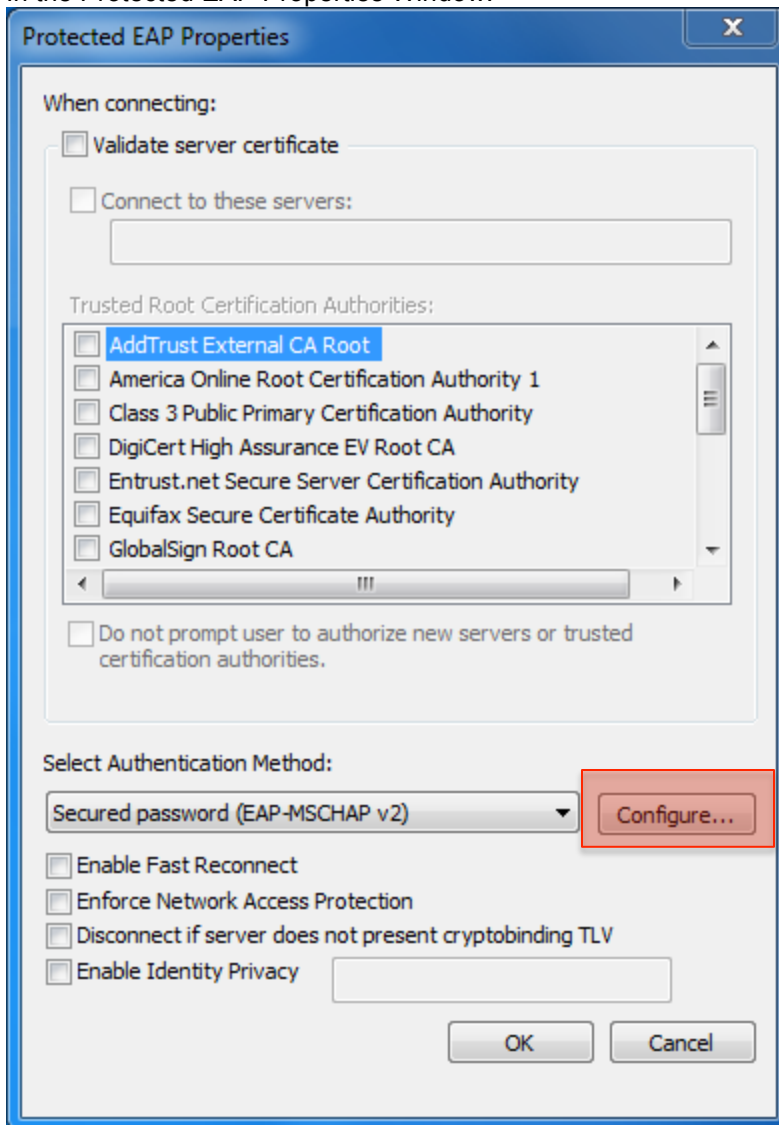


11. Select the **Authentication** tab.



- Make sure **Enable IEEE 802.1x authentication** is checked.
- Under Choose an authentication method make sure **Protected EAP (PEAP)** is selected.
- Check **Cache user information for subsequent connections to this network**.
Note: Checking this box will cause the computer to save your username and password every time you connect. If you share your computer with other users you should not check this box.
- Click **Settings**.

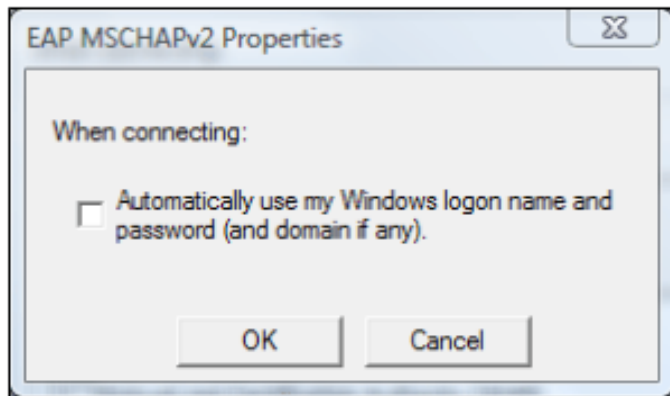
12. In the Protected EAP Properties Window:



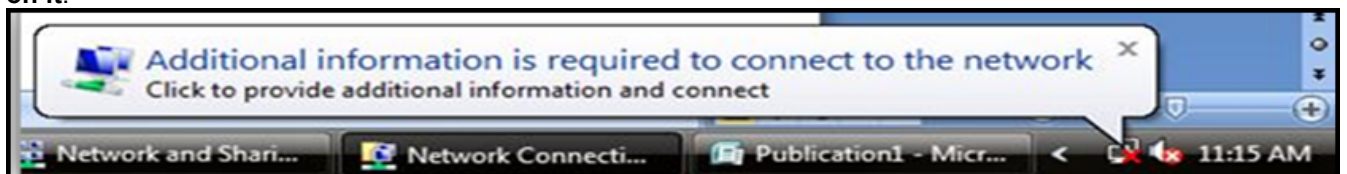
- Uncheck **Validate Server Certificate**.
- Under Select Authentication Method choose **Secured Password (EAP-MSCHAP v2)**.
- Uncheck **Enable fast reconnect**.

Click **Configure...**

13. Uncheck **Automatically use my Windows logon name and password (and domain if any)**, and then click **OK**.



14. Click **OK** two more times and close the remaining Windows.
15. A box will pop up in the lower right portion of your screen requesting additional information. **Click on it.**



Note: It may take a minute or so for this box to appear.

16. In the window that appears, type in your **Catawba Username** and **Password**. Leave the Logon domain blank. Click **OK**.

