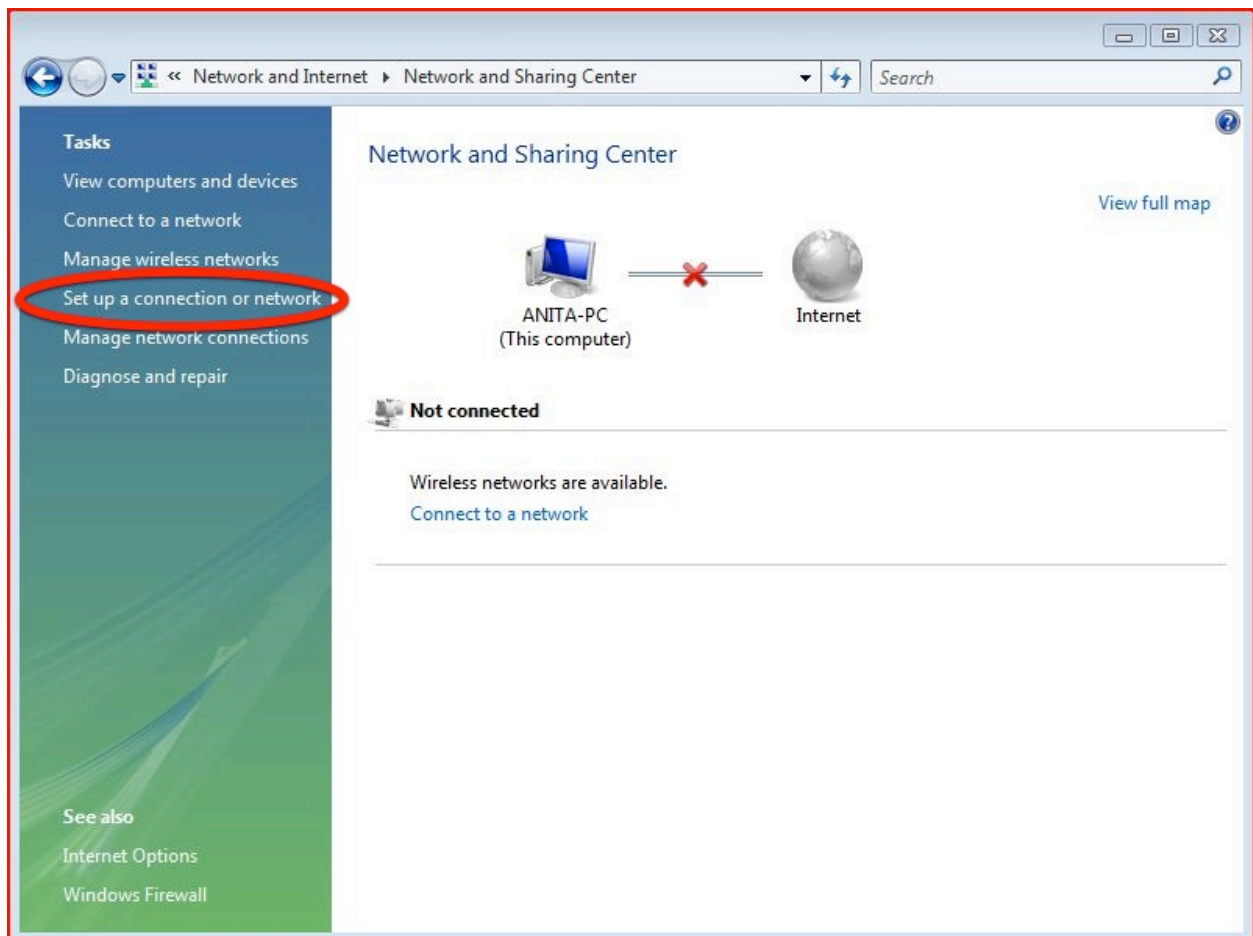


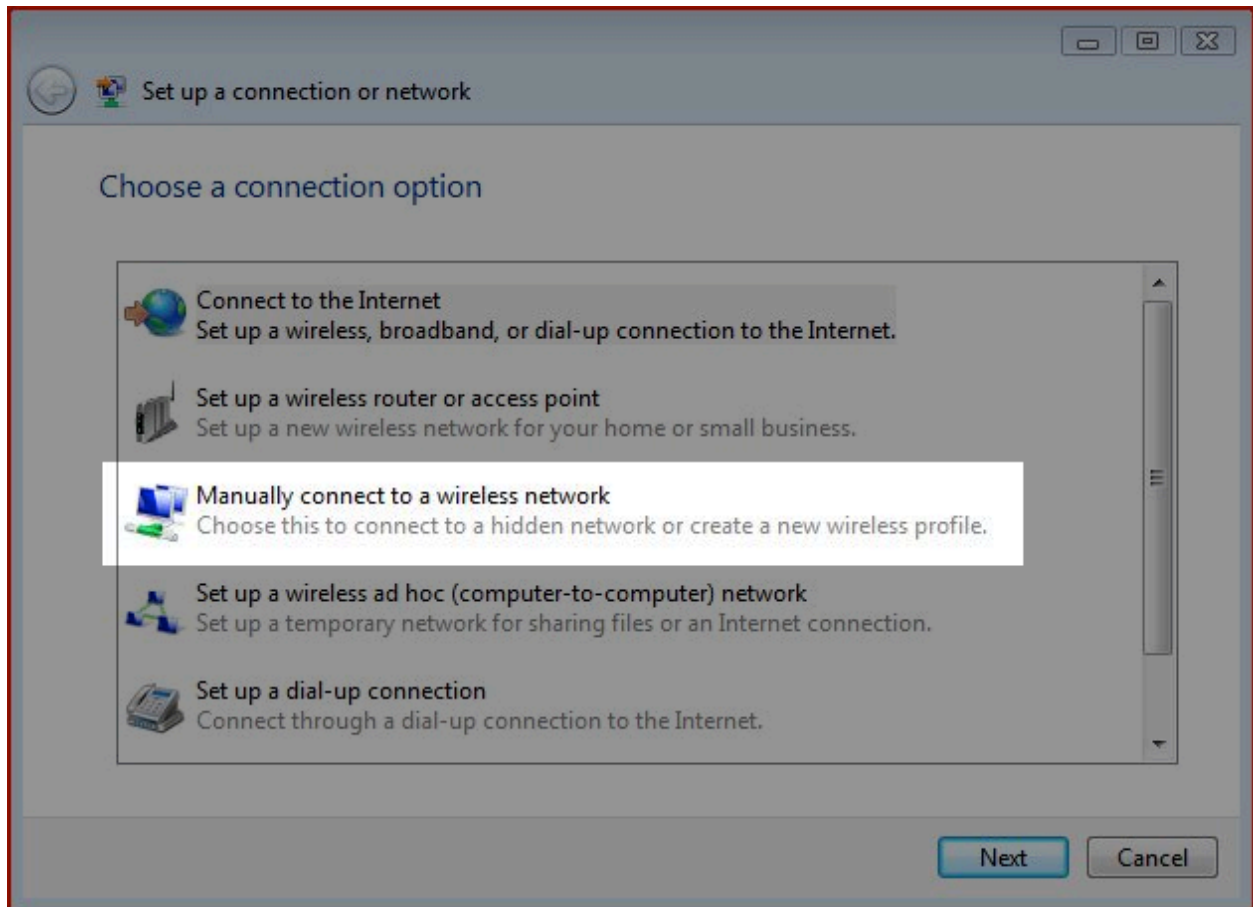
Wireless Configuration for Windows Vista

Complete the following steps to set up your Windows Vista computer to use the secure Catawba wireless connection.

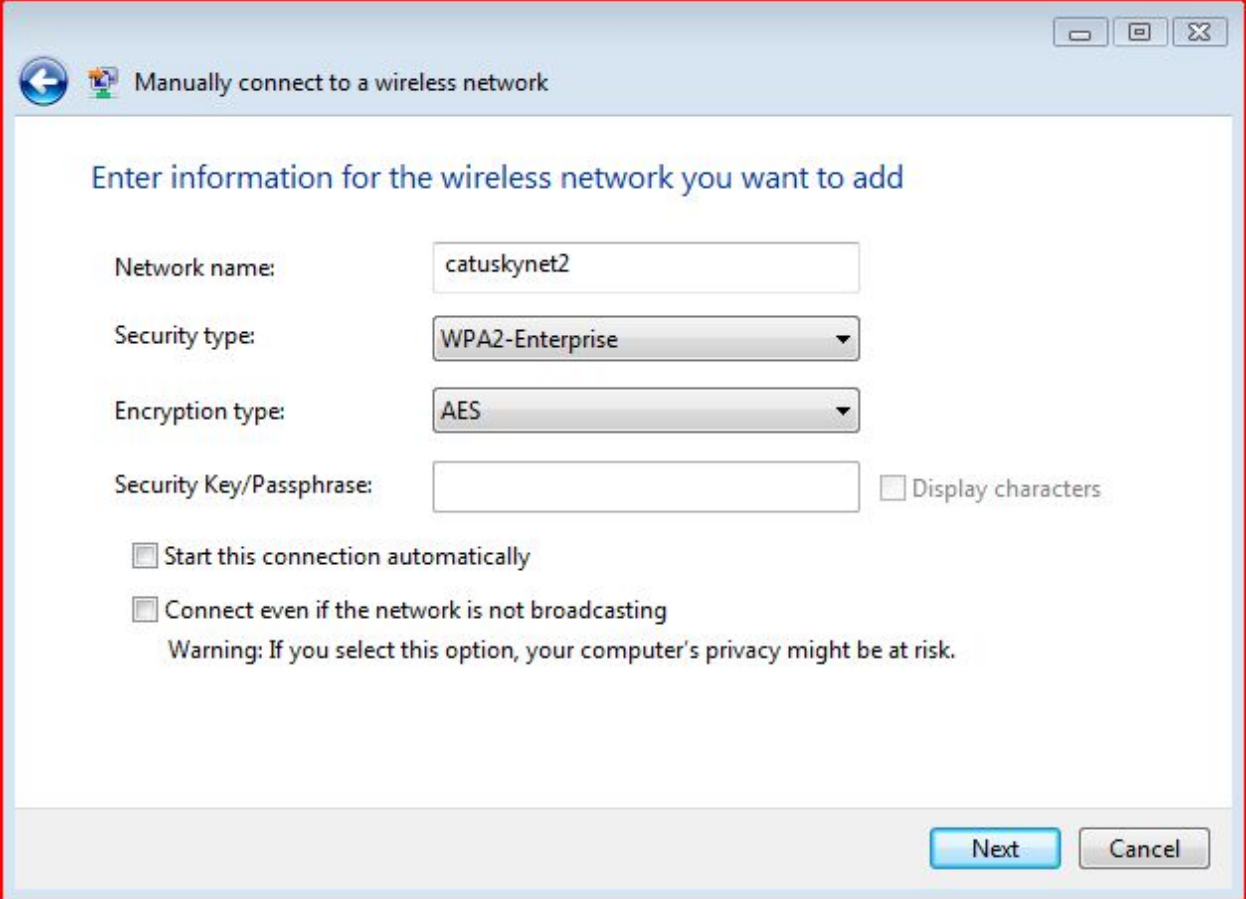
1. Open the Control Panel by going to **Start** → **Control Panel**.
2. Under **Network and Internet** Select **View network status and tasks**.
3. Select **Set up a connection or network**.



4. In the next dialog box, choose **Manually connect to a wireless network** then click **Next**.



5. Enter or select the following:
 - **Network name:** catuskynet2
 - **Security type:** WPA2-Enterprise
 - **Encryption type:** AES
 - Uncheck the **Start this connection automatically** checkbox
 - Click the **Next** button



Manually connect to a wireless network

Enter information for the wireless network you want to add

Network name:

Security type:

Encryption type:

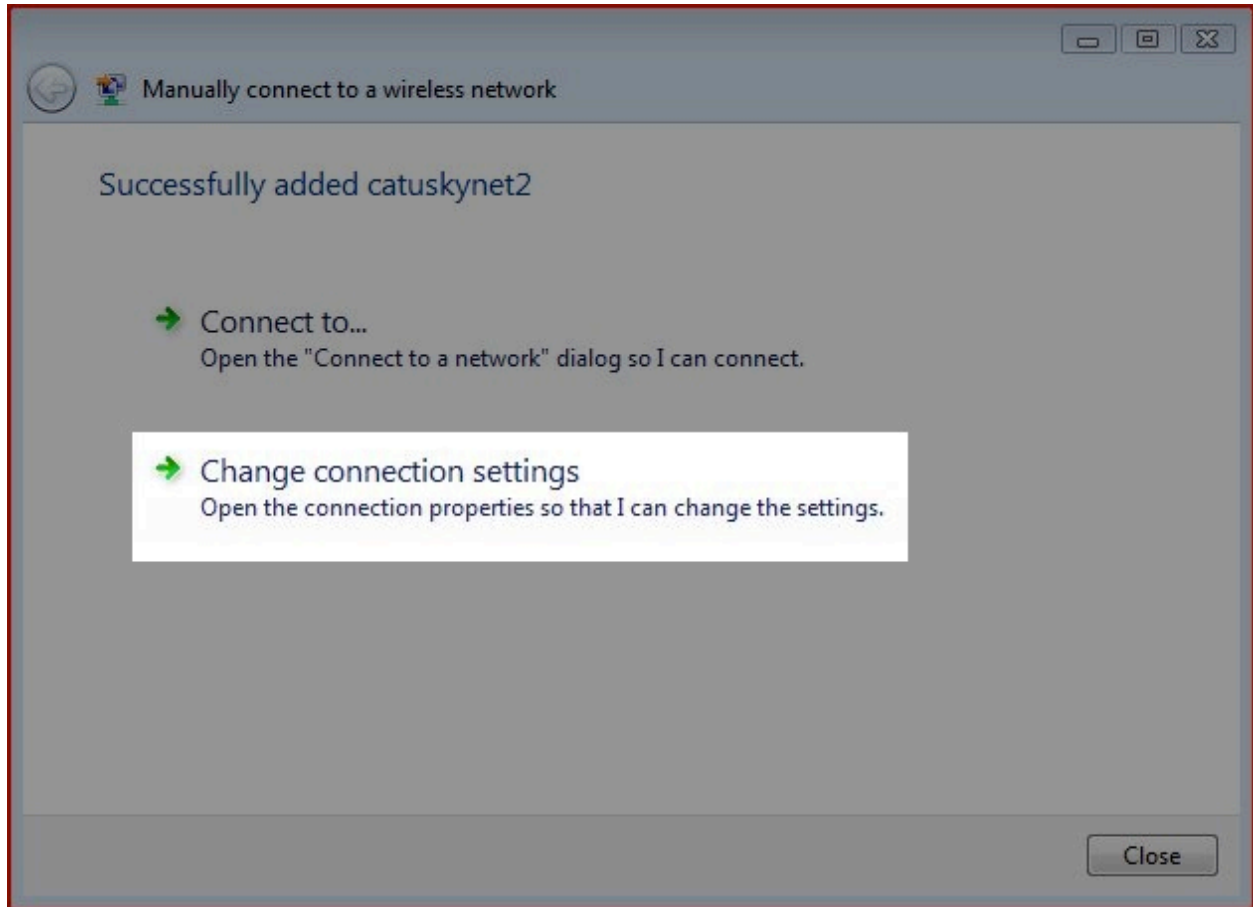
Security Key/Passphrase: Display characters

Start this connection automatically

Connect even if the network is not broadcasting

Warning: If you select this option, your computer's privacy might be at risk.

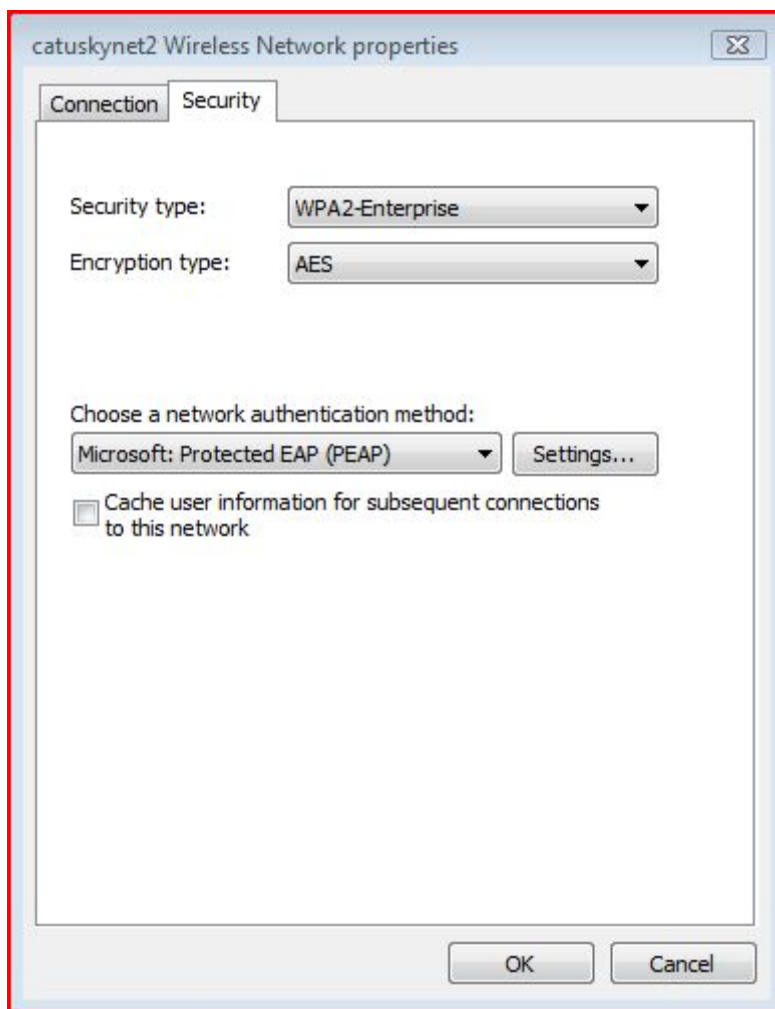
6. Click the **Change connection settings** link.



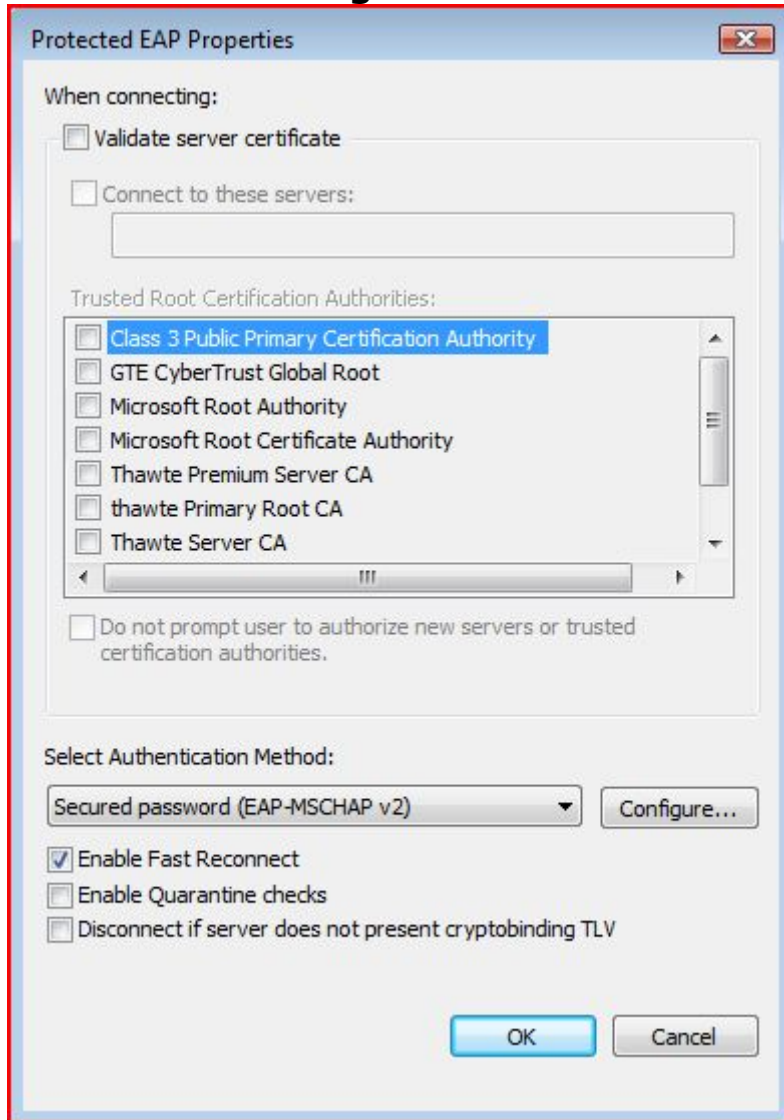
7. On the "Wireless Network properties" window, verify that **Connect automatically when the network** is in range is not checked, then click the **Security** tab.

8. On the **Security** tab, select these settings:

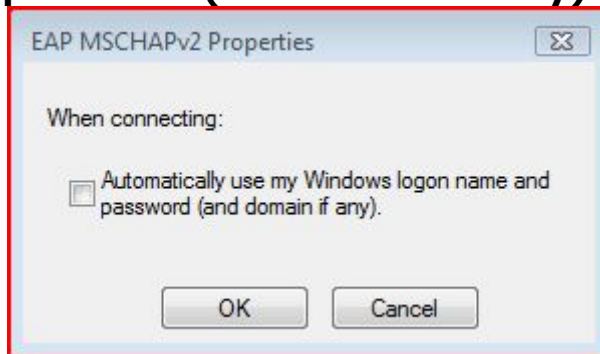
- **Security type:** WPA2-Enterprise
- **Encryption type:** AES
- **Choose a network authentication method:** Microsoft: Protected EAP (PEAP)
- Uncheck **Cache user information for subsequent connections to this network**
- Click the **Settings** button



9. On the "Protected EAP Properties" window, select these settings:
 - Uncheck **Validate server certificate**
 - **Select Authentication Method:** Secured Password (EAP-MSCHAP v2)
 - Click the **Configure...** button

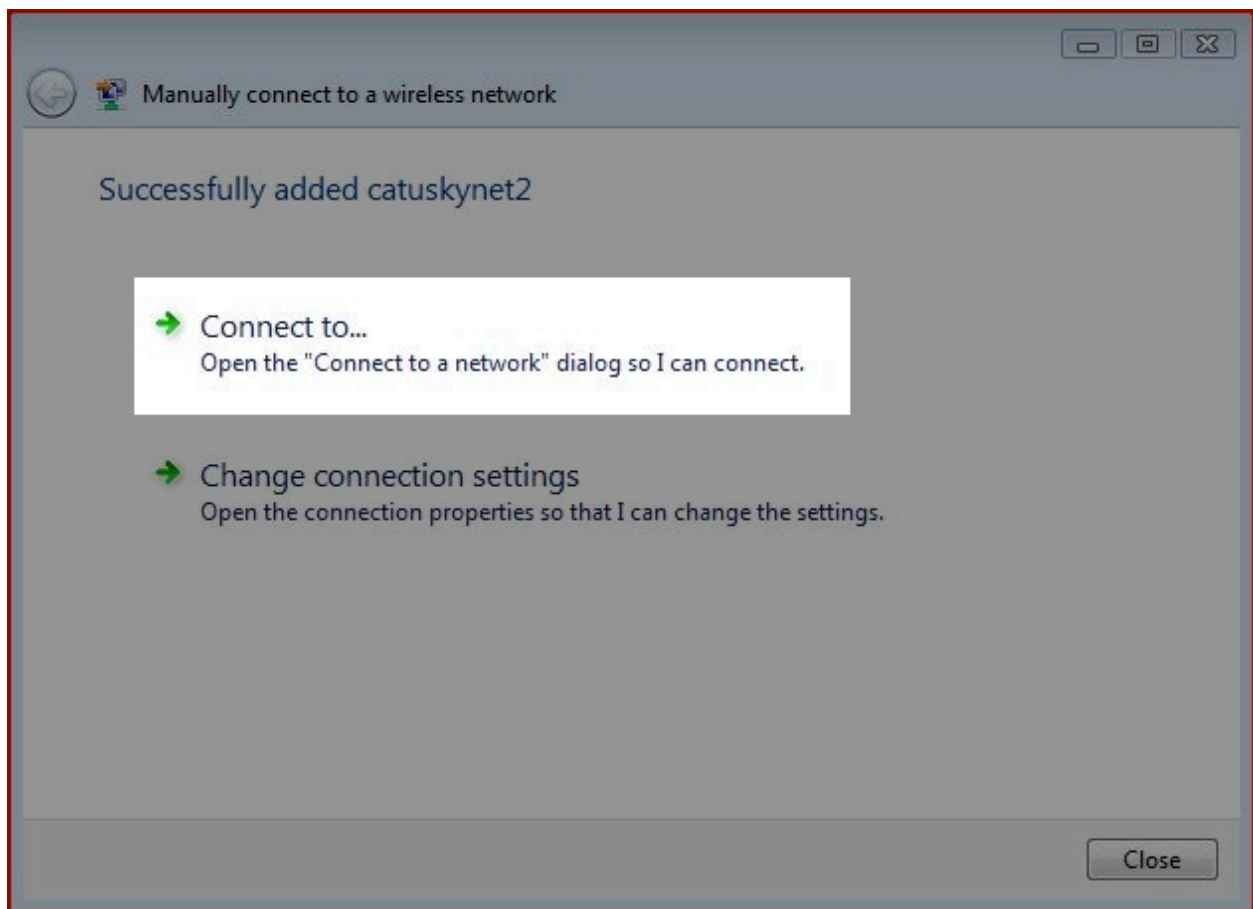


10. Uncheck **Automatically use my Windows logon name and password (and domain if any)**.

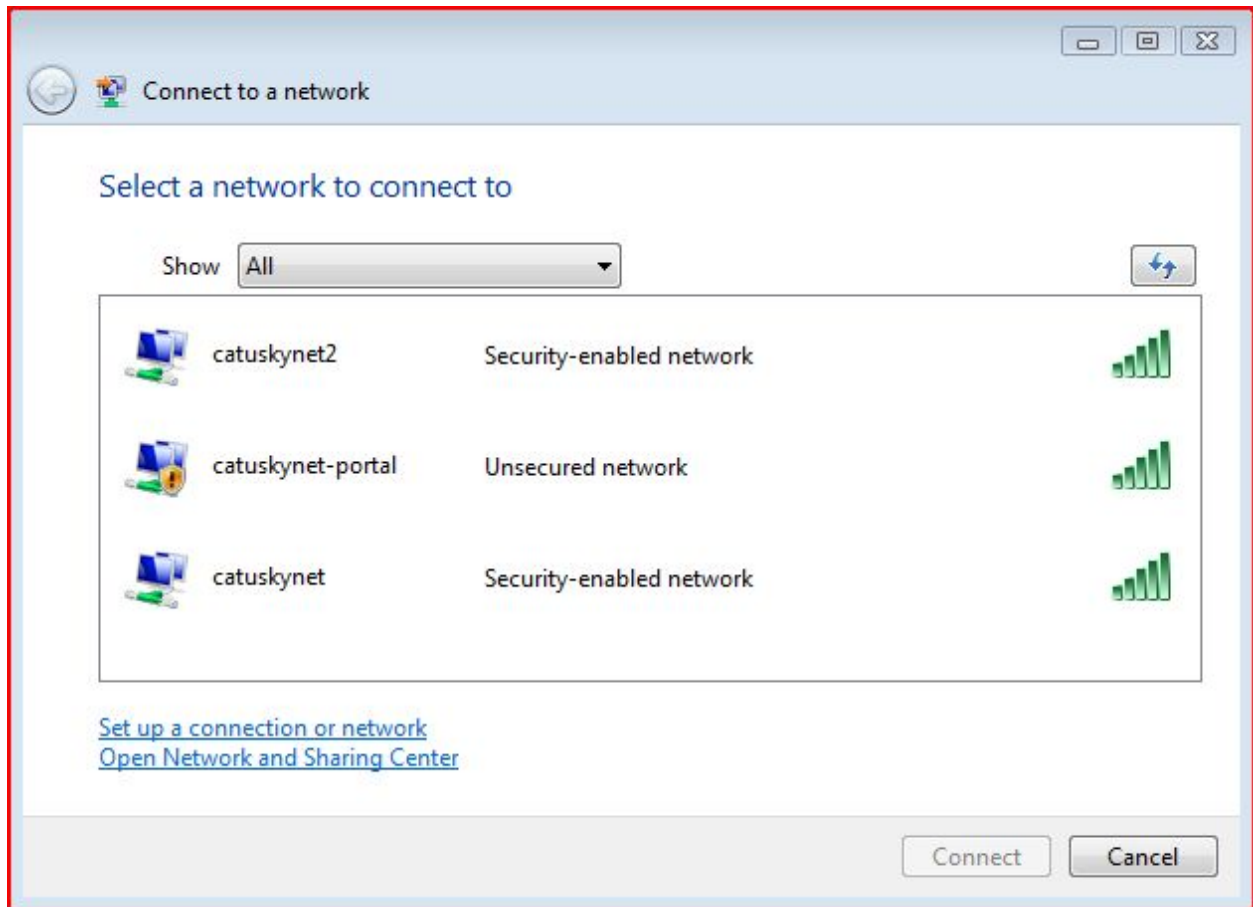


11. Click the **OK** button on all open "Wireless Network Properties" windows, until you get to the **Manually connect to a wireless network** window.

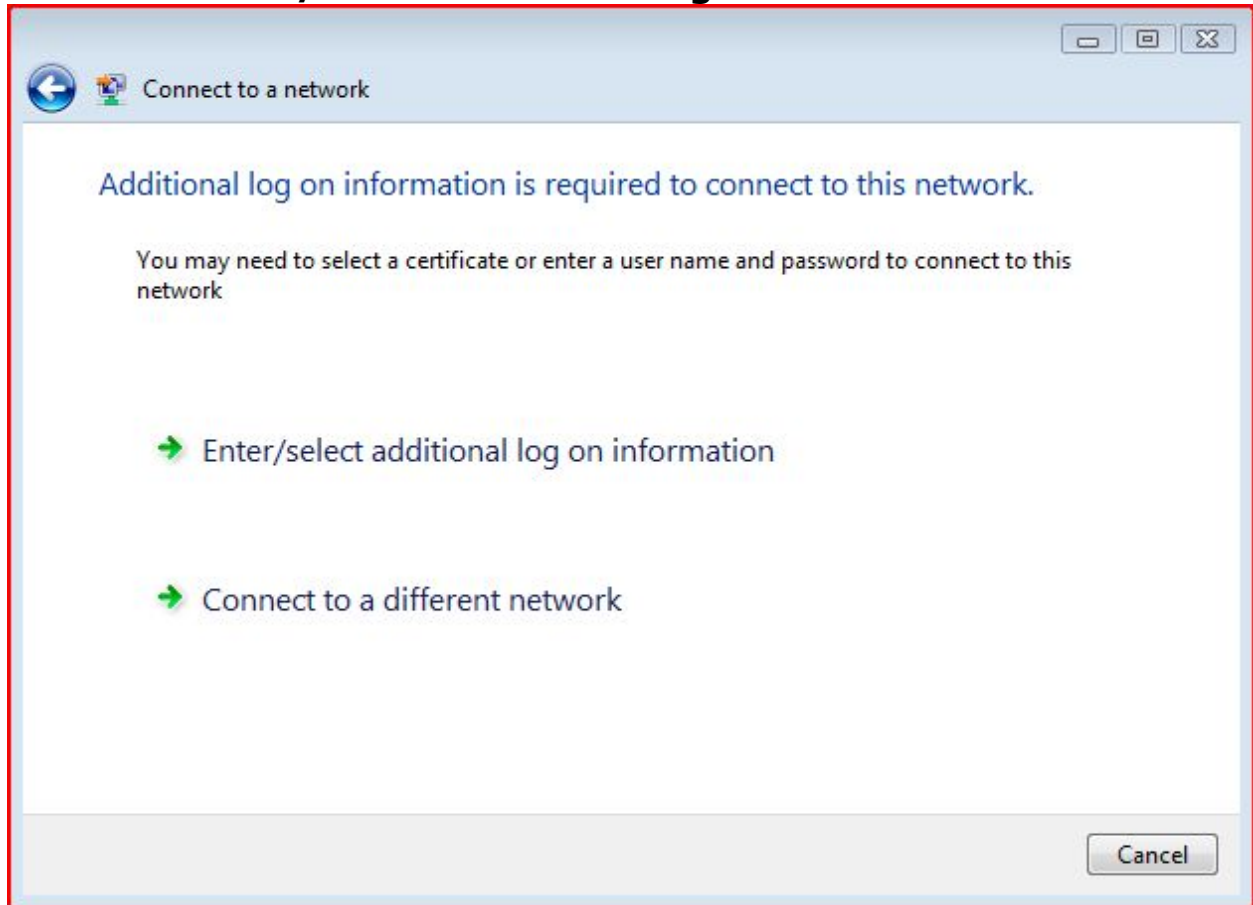
12. Click the **Connect to...** link.



13. In the "Connect to a network" window, select **catuskynet2** and then click the **Connect** button.



14. Click **Enter/select additional log on information.**



15. Enter your Catawba username and password. Leave the **Logon domain field** blank. Click the **OK** button.



Enter Credentials



User name: imstudent

Password: ●●●●●●●●●●

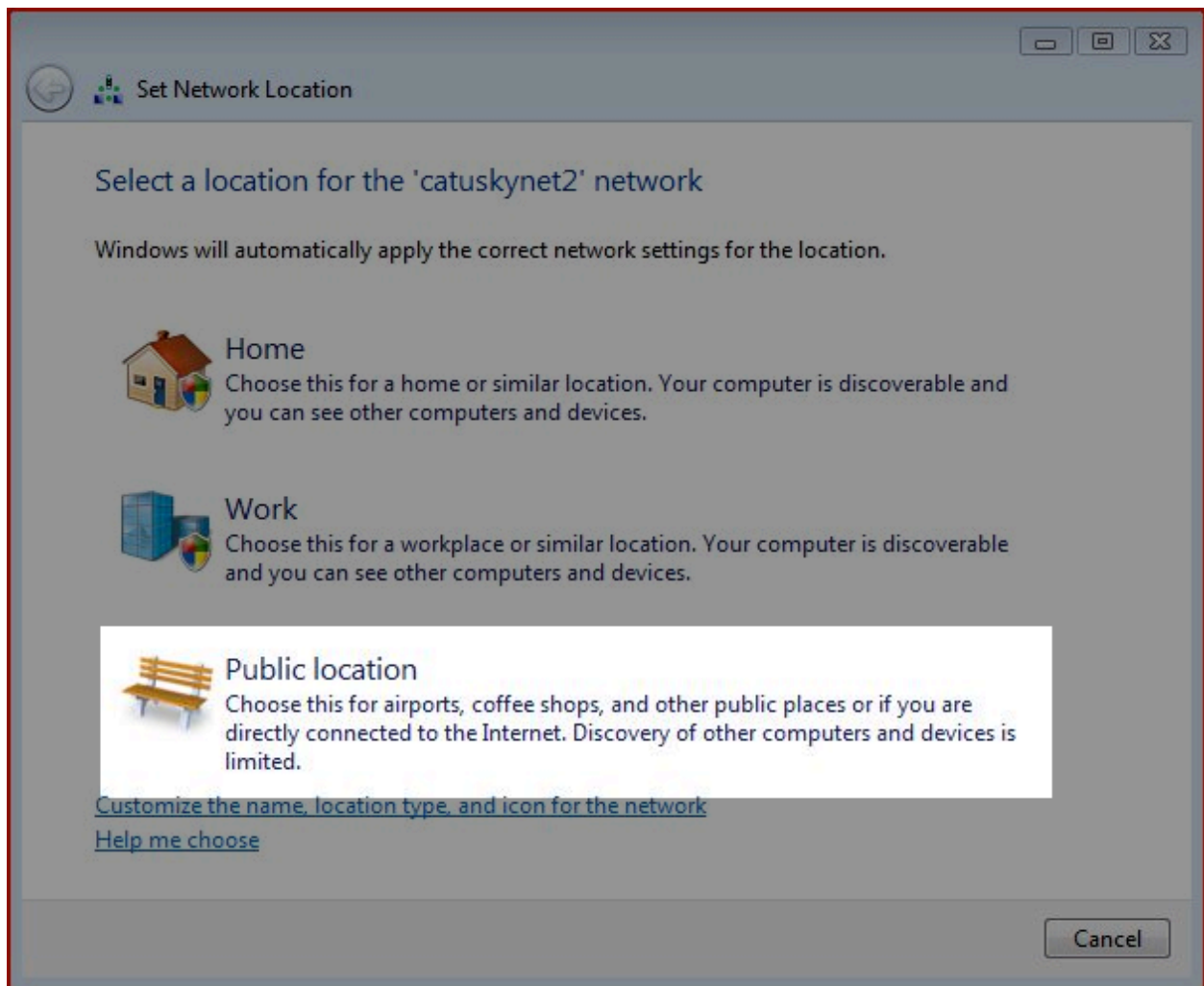
Logon domain:

Save this user name and password for future use

OK Cancel

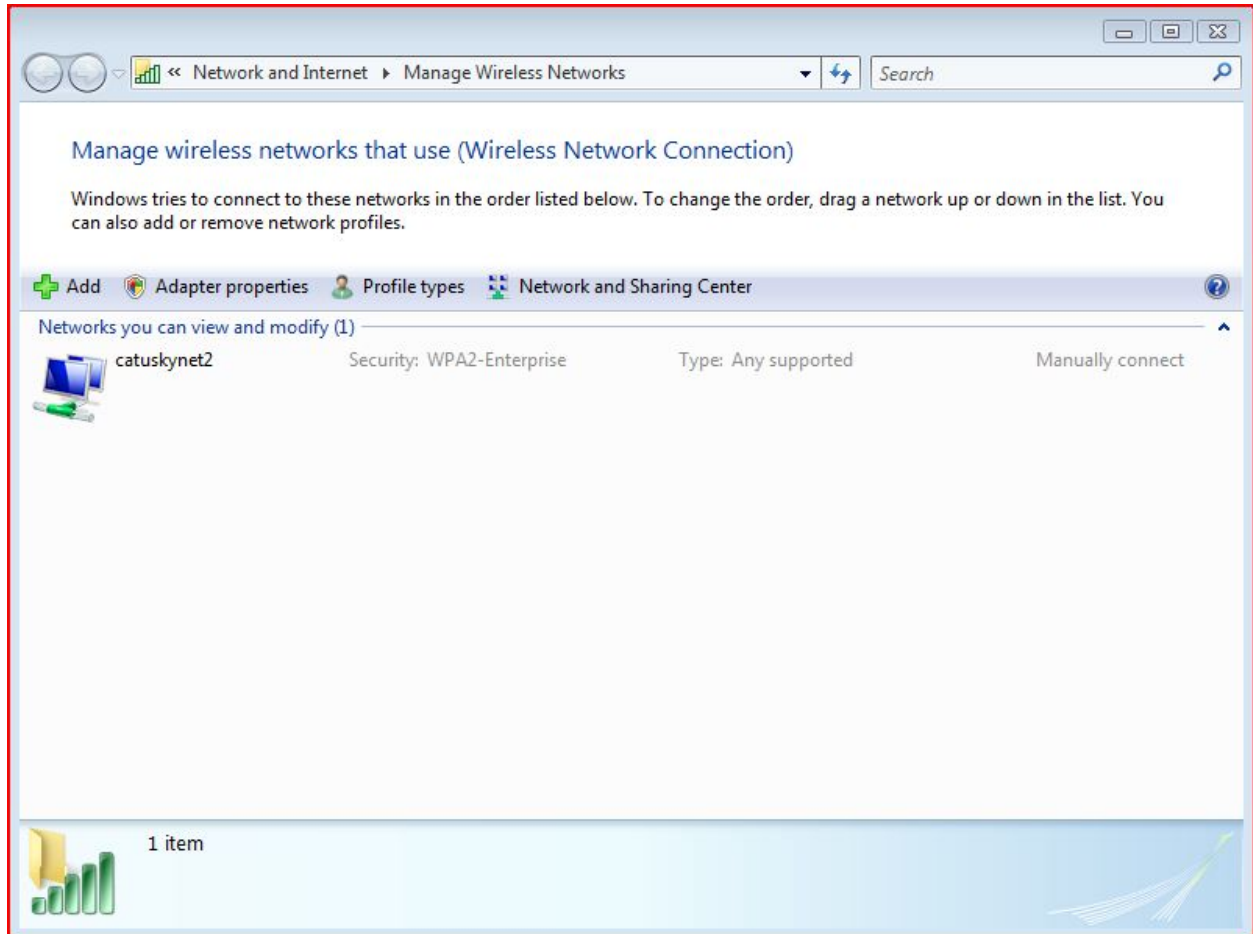
16. You may be prompted to re-enter your Catawba username and password. When you have successfully connected to the network, you'll see a "Successfully connected to catuskynet2" message. Click the **Close** button.

17. You may be prompted to set the network location. If so, click **Public location**. Click the **Close** button.

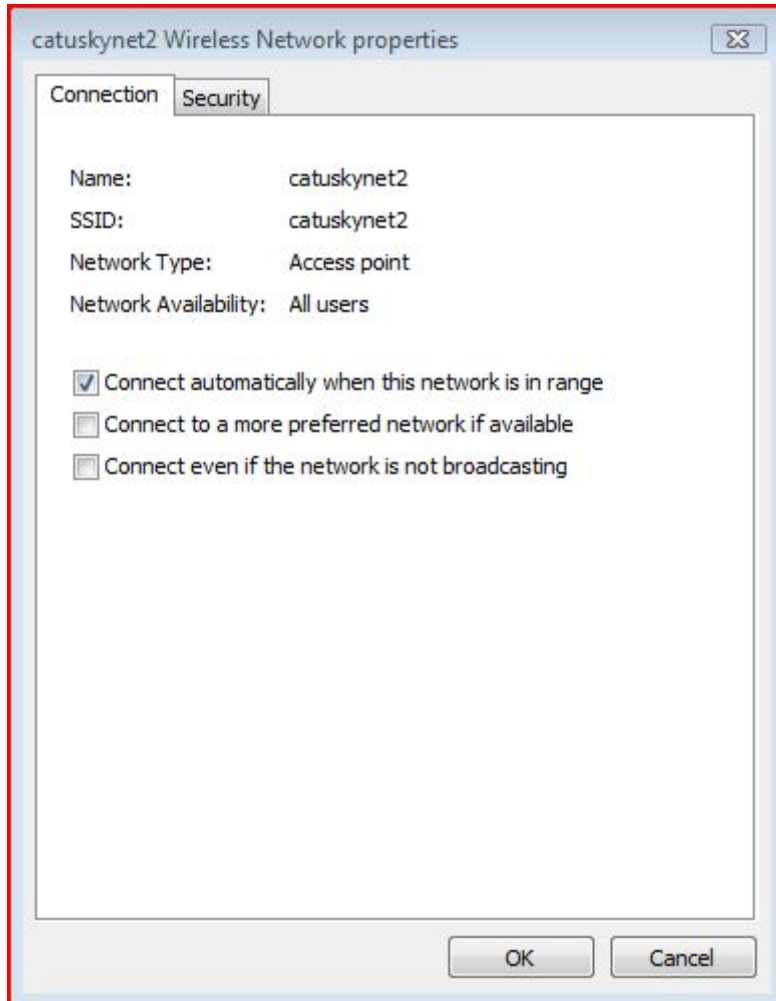


18. Now that you have a working catuskynet2 connection, you'll need to modify a couple to settings so that you can automatically connect to this network. In the Network and Sharing Center, click **Manage Wireless Networks** under **Tasks**.

19. Double-click on **catuskynet2**.



20. Check the **Connect automatically when this network is in range** checkbox.



21. Click the **Security** tab.

22. Check the **Cache user information for subsequent connections to this network** checkbox and then click the **OK** button. **NOTE:** A bubble may appear towards the bottom right of your screen prompting for more information. If so, click it and re-enter your Catawba username and password.

