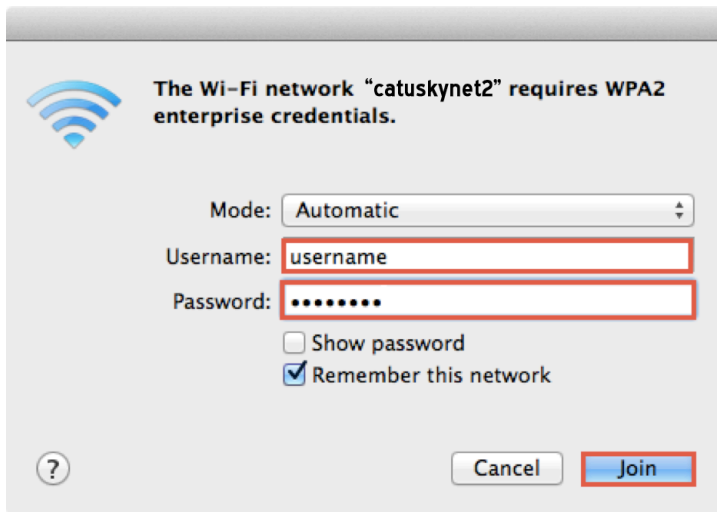
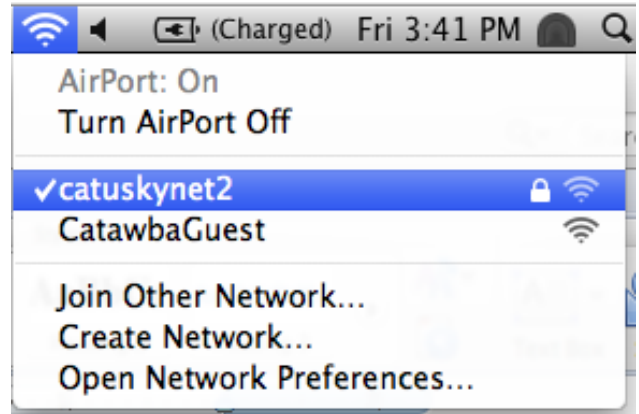


Catawba College Wireless Network Configuration for Mac OS versions 10.7 - 10.11

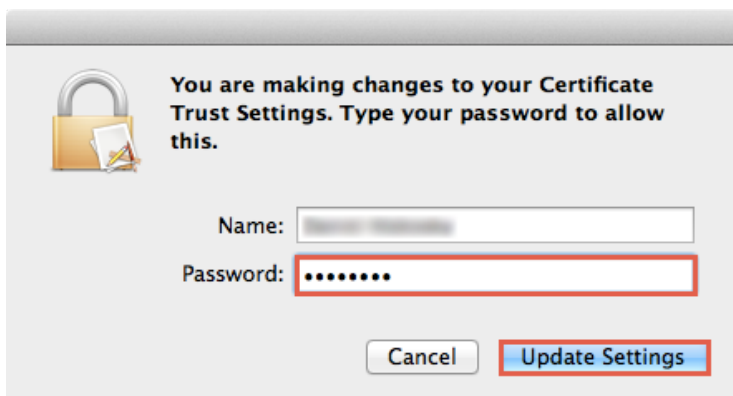
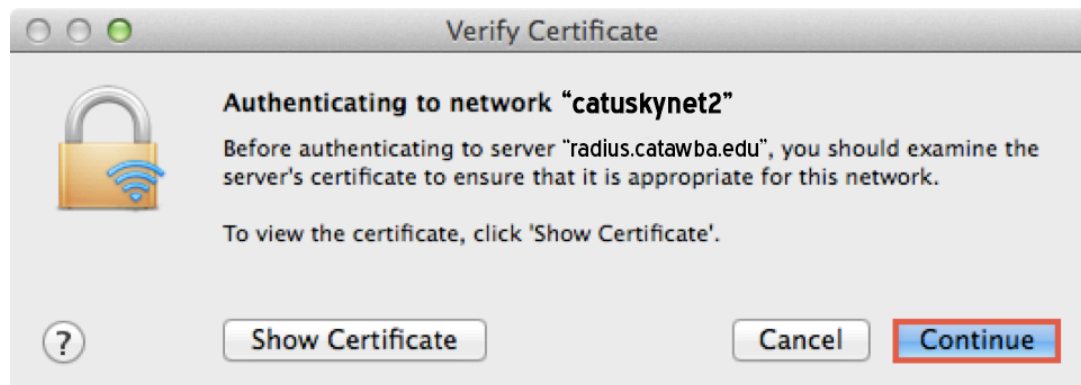
Complete the following steps to set up your Mac computer to use the secure Catawba wireless connection.

1. Click the **Airport icon** and select **catuskynet2**.



2. In the authentication window enter your **Catawba Username** and **Password** and click **Join**.

3. If you entered your **Catawba Username** and **Password** correctly you will then be asked to verify a certificate.



4. Click **Continue** and enter your **Computer Account's Username** and **Password**. Then click **Update Settings**.