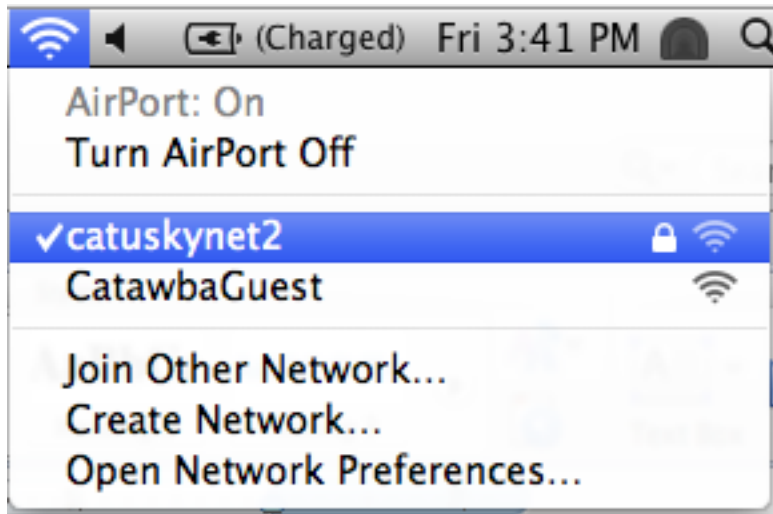


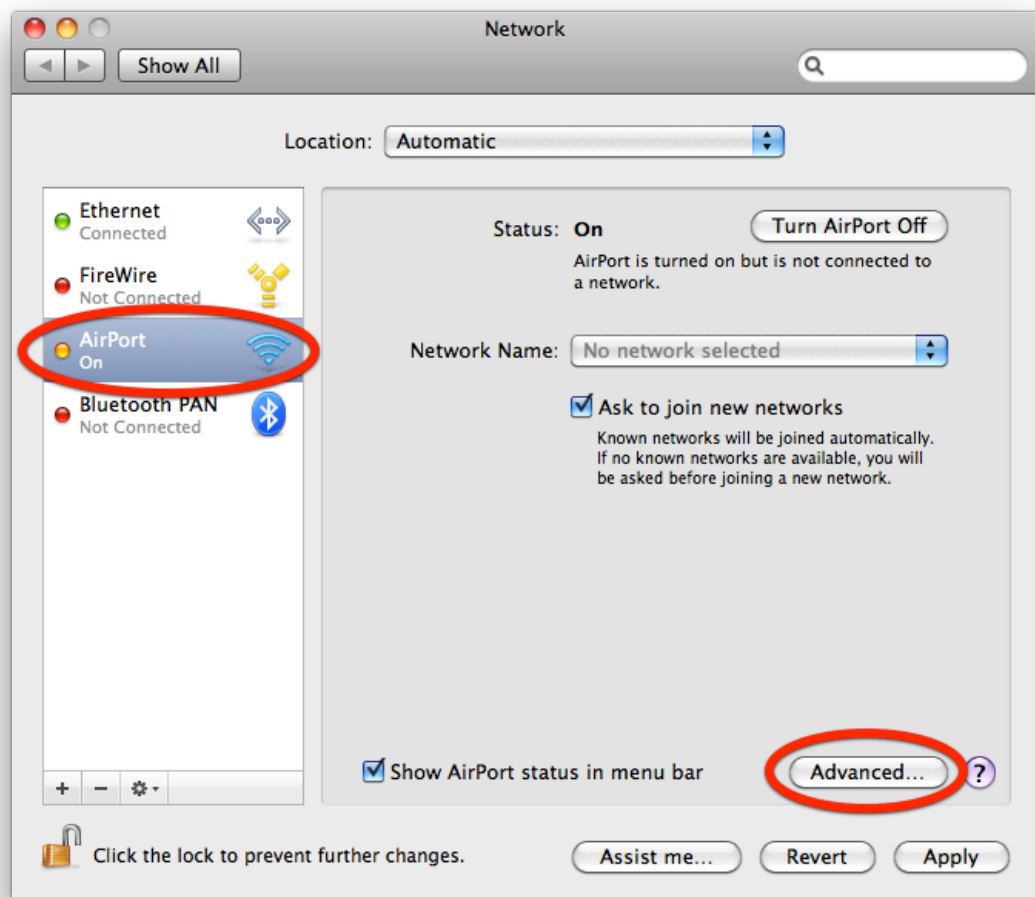
Wireless - Manual Configuration for Macintosh 10.5 and 10.6

Complete the following steps to set up your Mac computer to use the secure Catawba wireless connection.

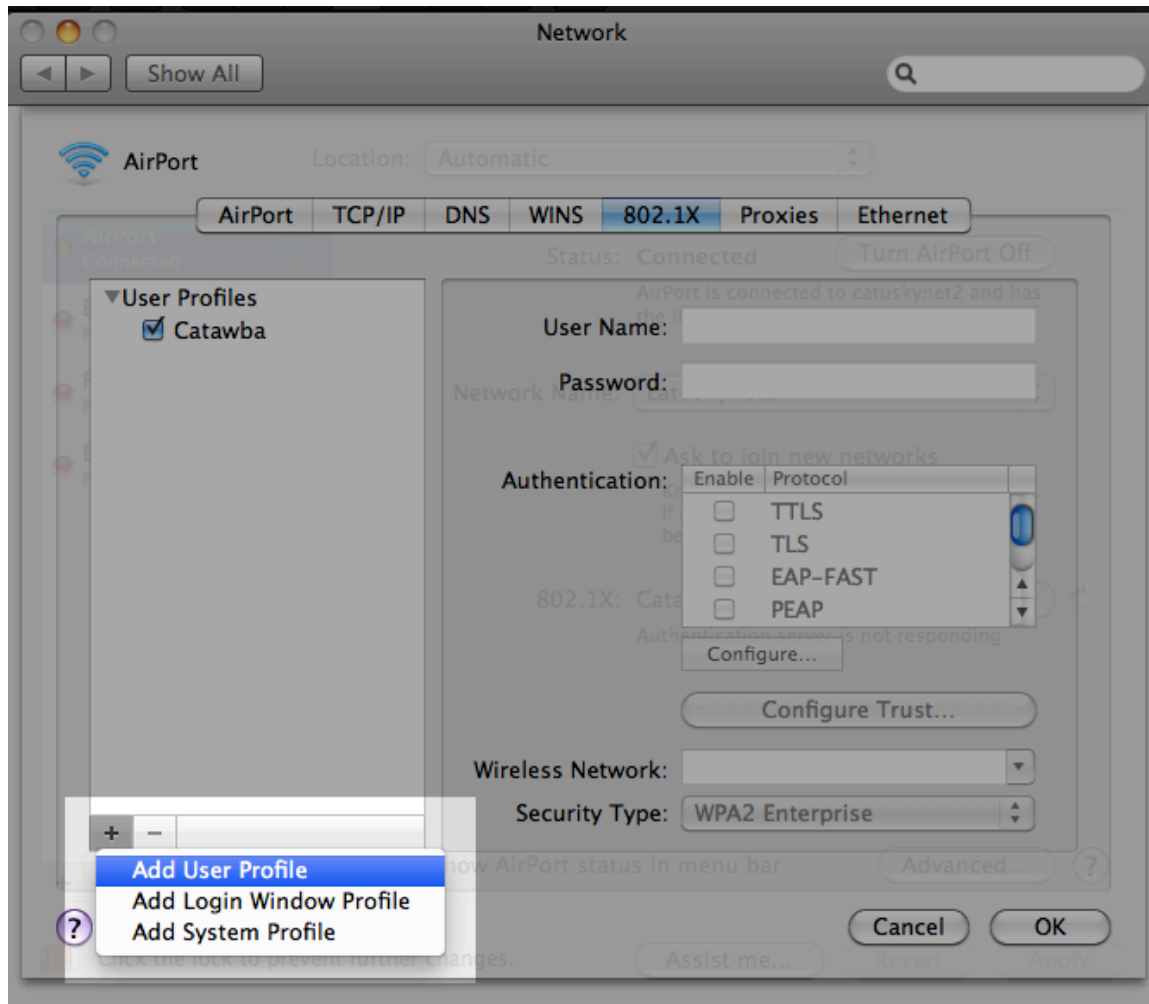
1. Select the configuration options by clicking on the AirPort Icon on your toolbar and selecting **Open Network Preferences**.



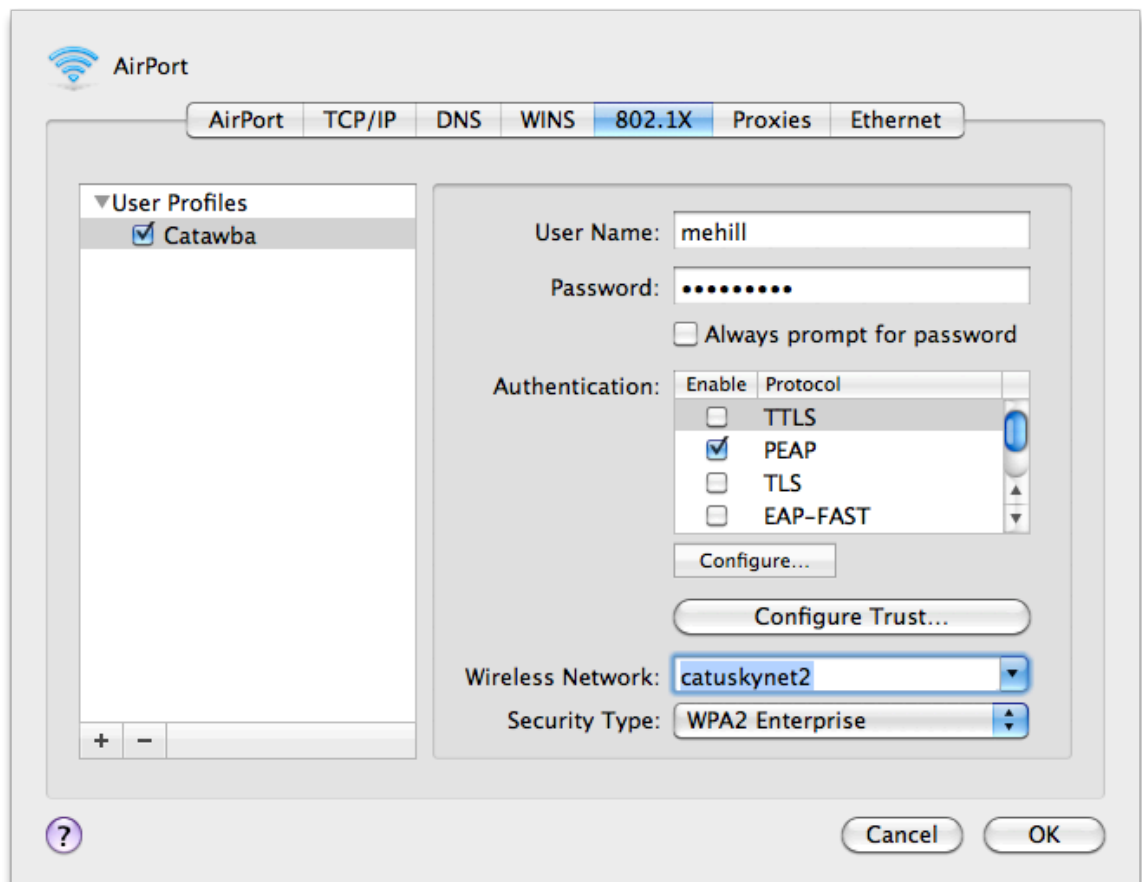
2. On the "Network Preferences" window, click on **AirPort** and select the **Advanced** button.



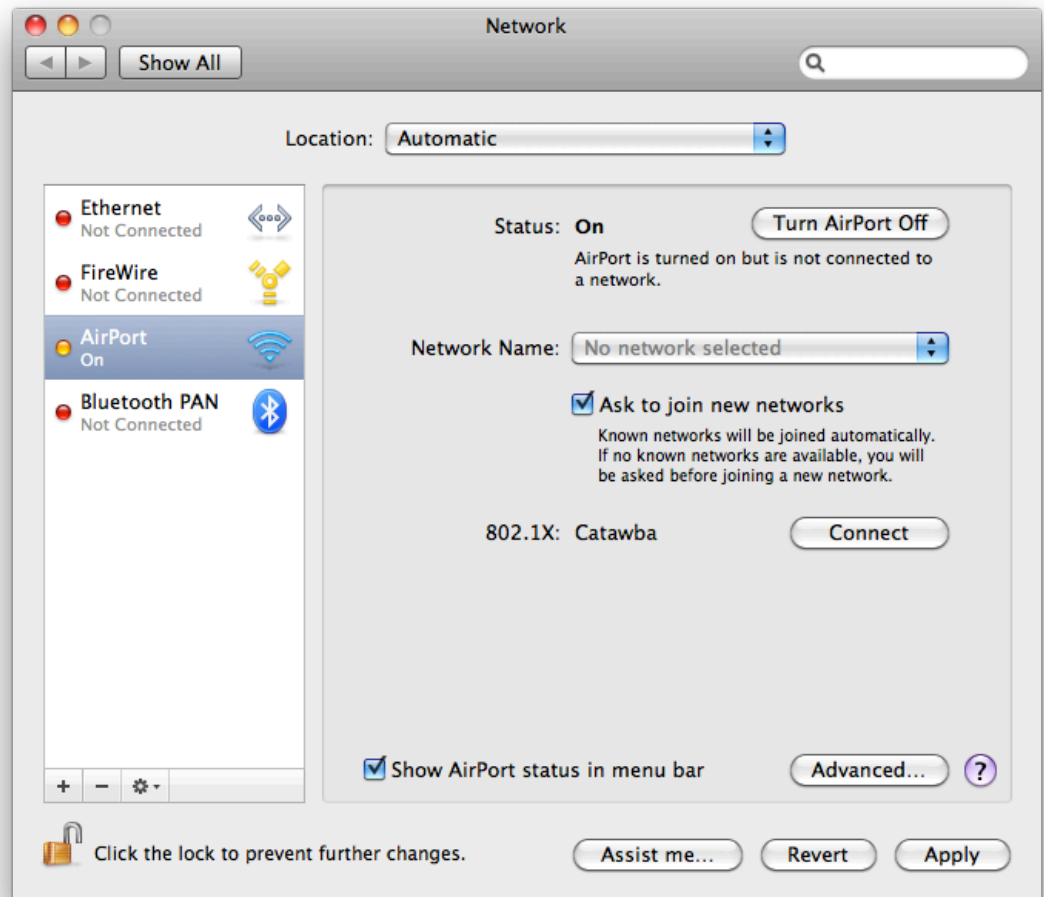
3. Click on the **802.1X** tab. Then click on the plus (+) button in the lower left corner and select **Add User Profile**.



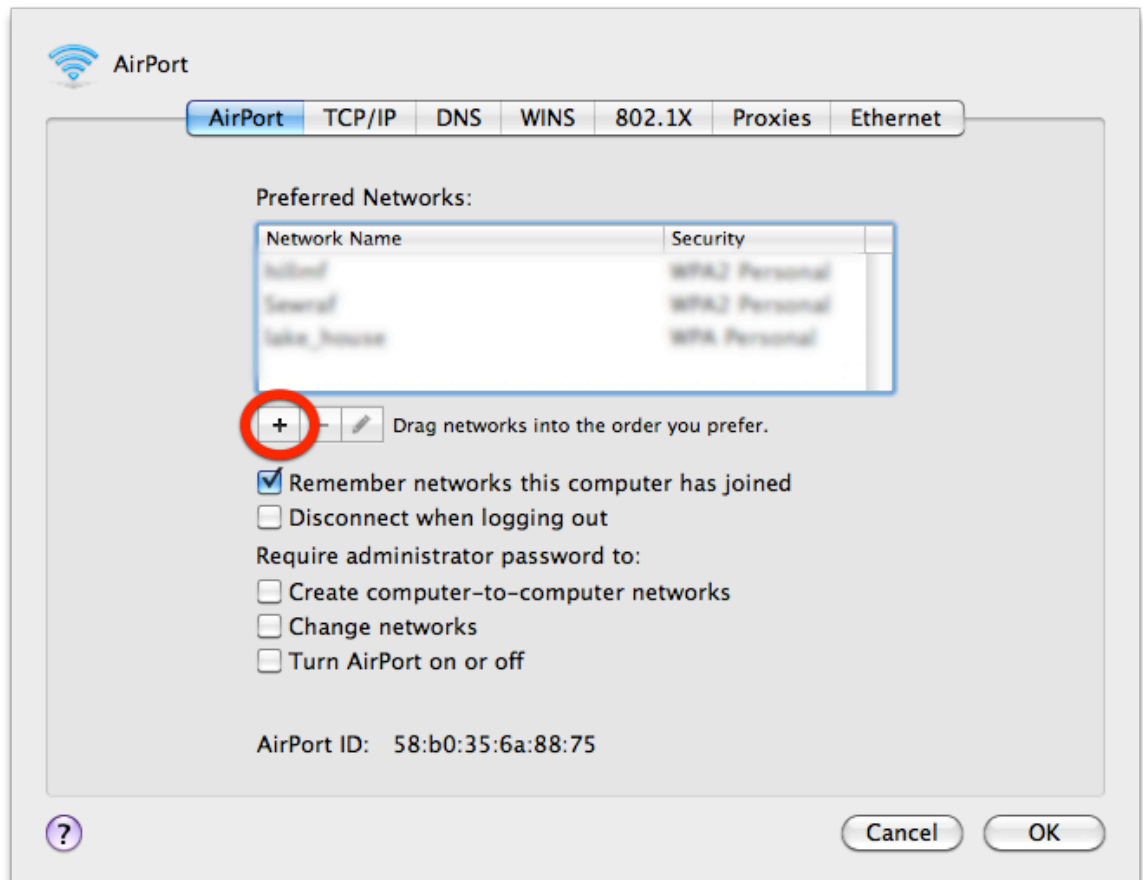
4. Enter the user profile information:
 - Type **Catawba** in the field under the **User Profiles** list on the left side.
 - Enter your Catawba username and password in appropriate fields on the right.
 - Make sure that **PEAP** is the only box checked in the **Authentication** list.
 - If you are in range of the catuskynet2 network, make sure that it is selected in the **Wireless Network** drop-down menu. Otherwise type it in manually.
 - Click the **OK** button.



5. Click the **Apply** button.

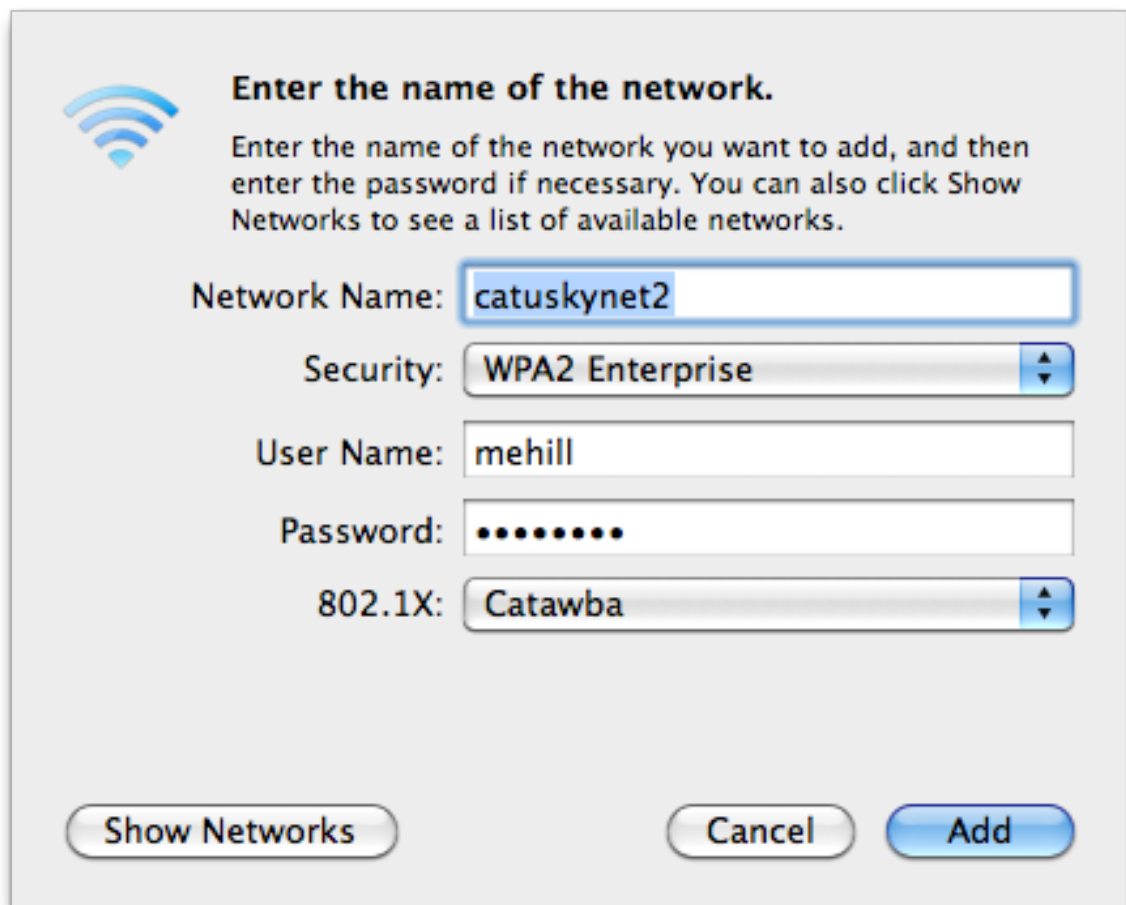



6. Click the **Advanced** button again and click the AirPort option on the top of the "Network Preferences" window. Click the + button to add a network.



7. Enter the network information:

- **Network Name:** catskynet2
- **Security:** WPA2 Enterprise
- **User Name:** <Your Catawba username>
- **Password:** <Your Catawba Password>
- **802.1X:** Catawba
- Click the **Add** button



 **Enter the name of the network.**

Enter the name of the network you want to add, and then enter the password if necessary. You can also click Show Networks to see a list of available networks.

Network Name:

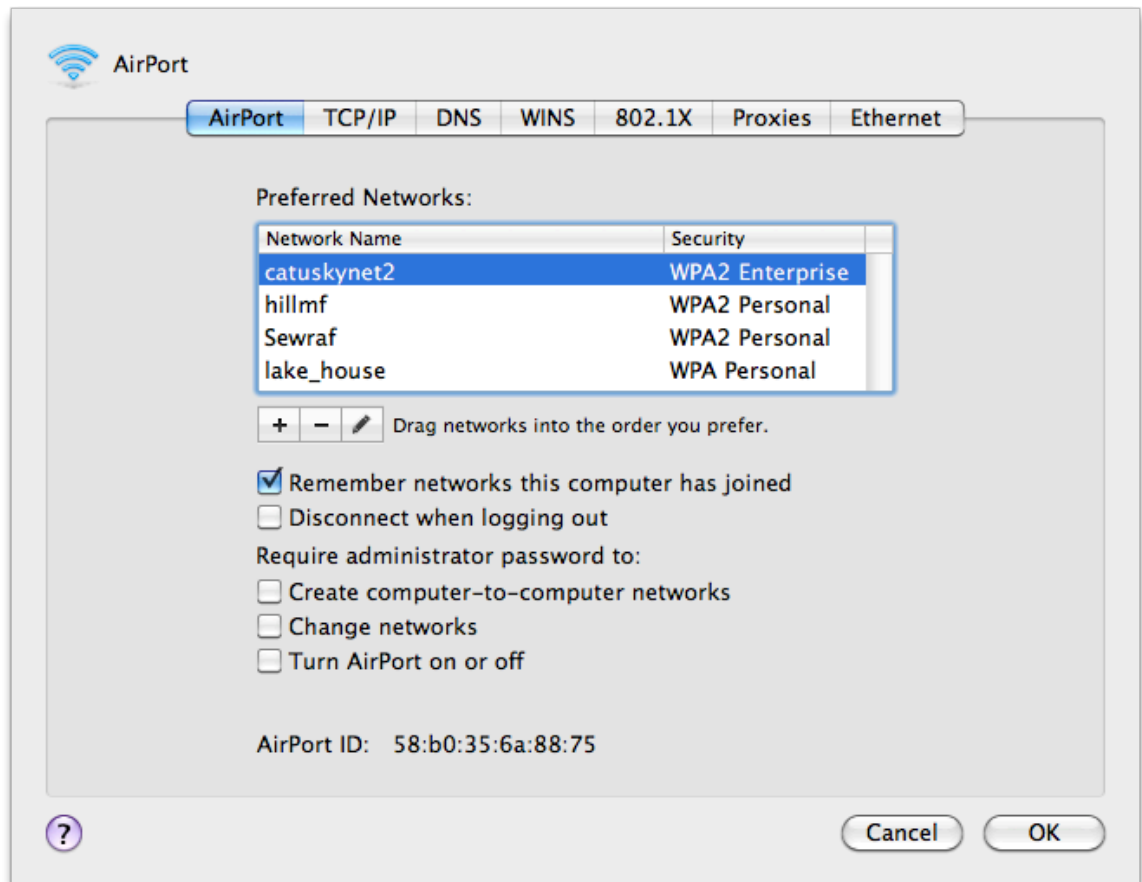
Security:

User Name:

Password:

802.1X:

8. Drag **catuskynet2** to the top of the **Preferred Network** list and click **OK**.



9. Click the **Apply** button.